

## **About Los Angeles Harbor College**

### **Mission Statement**

Los Angeles Harbor College (Harbor College) serves our diverse community by providing access to associate and transfer degrees, certificates, economic and workforce development, and adult and noncredit instruction. We promote equity, diversity, and student success through academic programs and support services that ensure our students become productive members of a global society.

### **Vision Statement**

Harbor College provides a stimulating learning environment that prepares members within the community to meet goals and opportunities successfully.

### **Values**

Student Success, Excellence, Integrity, A Supportive Environment, Personal and Institutional Accountability, and Civic Responsibility.

### **Institutional Student Learning Outcomes**

*ISLO 1 - Communication:* Use oral, written, and non-verbal modes of expression appropriate to the audience and purpose.

*ISLO 2 - Cognition:* Use critical thinking skills and quantitative reasoning to analyze, synthesize, and evaluate ideas and information to interpret real world information in the context of a discipline.

*ISLO 3 - Information Literacy and Technological Competency:* Utilize technology for research and learning skills necessary to achieve educational, professional, and personal objectives.

*ISLO 4 - Social Responsibility and Ethics:* Demonstrate sensitivity to and respect for others by promoting equity, diversity, and success by participating as responsible citizens that empower self, others, and the community.

### **Strategic Educational Master Plan Goals (SEMP)**

*Goal 1 - Access and Preparation for Success:* Improve equitable access; help students attain important early educational momentum points.

*Goal 2 - Teaching and Learning for Success:* Strengthen effective teaching and learning by providing a learner-centered educational environment; help students attain their goals of certificate and degree completion, transfer, and job training and career placement; increases equity in the achievement of these outcomes.

*Goal 3 - Organizational Effectiveness:* Improve organizational effectiveness through data-informed planning and decision-making, process assessment, and professional development.

*Goal 4 - Resources and Collaboration:* Increase and diversify sources of revenue in order to achieve and maintain fiscal stability and to support District initiatives. Enhance and

maintain mutually beneficial external partnerships with business, labor, and industry and other community and civic organizations in the greater Los Angeles area.

### **History**

In 1941 the Education Committee of the Wilmington Chamber of Commerce petitioned the Los Angeles City Board of Education to establish trade extension classes at Banning High School to meet critical, war-inspired training needs.

Realizing that such trade extension classes would not be a long-range answer to the educational needs of

the area, the Education Committee (expanded in 1945 to include representatives from San Pedro and Lomita) called a meeting of representatives of key industries located in the Harbor Area to discuss the need for either a trade or technical school.

After surveys of projected population, property valuation, and employment possibilities, these community leaders indicated a need for such a post-high school institution, and the Education Committee then petitioned the Los Angeles City Board of Education to provide such a school in the area.

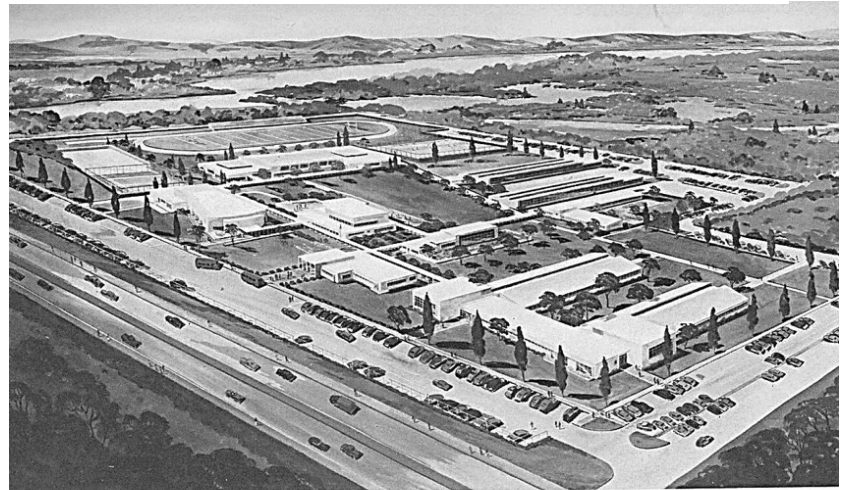
Los Angeles Harbor College officially opened in September 1949. The College has grown from an enrollment of 400 students to a current enrollment of approximately 10,000 students including residents from Wilmington, Carson, Harbor City, Lomita, Gardena, Palos Verdes, San Pedro and Torrance. While still maintaining a technical program, the academic and general education offerings have increased to meet the changing needs of the community.

### **Accreditation**

Los Angeles Harbor College is a public two-year college providing educational services under the Los Angeles Community College District Board of Trustees. Los Angeles Harbor College is accredited by the Accrediting Commission for Community and Junior Colleges of the Western Association of Schools and Colleges and is approved under the regulations of the California Community Colleges. The University of California, California State University systems and other colleges and universities give full credit for appropriate courses completed.

Harbor College's accreditation was reaffirmed by the Accrediting Commission for Community and Junior College in June 2023.

*Figure 1.1 Architectural rendering of the new Los Angeles Harbor Junior College from 1949.*



ARCHITECT'S DRAWING OF LOS ANGELES HARBOR JUNIOR COLLEGE

## Fall 2023 Facts at a Glance

Location and Phone Number	1111 Figueroa Place Wilmington, CA 90744 (310) 233-4000
Website	<a href="http://www.lahc.edu">www.lahc.edu</a>
Enrollment	19,456
Student Headcount	9,165
Age:	
Concurrent High School	20.8%
Under 20	19.4%
20 - 24	25.3%
25 - 34	20.1%
35 - 54	12.1%
55 and over	2.3%
Gender:	
Female	58.1%
Male	40.0%
Non-Binary	0.7%
Unknown	1.2%
Ethnicity:	
Asian	10.1%
Black	11.6%
Hispanic	57.4%
Multi-ethnic	4.4%
Unknown	1.8%
White	14.4%
Fees & Tuition:	
Enrollment Fee	\$46/unit
Student Representation Fee	\$2
Health Fee	\$19
Non-Resident Fee	\$342/unit
International Resident Fee	\$342/unit
International Student Medical Insurance Fee (IMED)	\$695/semester
Academic Programs	<ul style="list-style-type: none"> <li>• 56 Associate and Transfer degree programs</li> <li>• 47 Credit certificate programs</li> <li>• 15 Non-credit certificate programs</li> </ul>
Academic Divisions (credit and non-credit)	<ul style="list-style-type: none"> <li>• 10 academic divisions</li> <li>• 75 disciplines</li> </ul>
Unrestricted General Fund Final Budget (2023-24)	\$44,572,252

Unless otherwise noted, figures shown are for credit programs