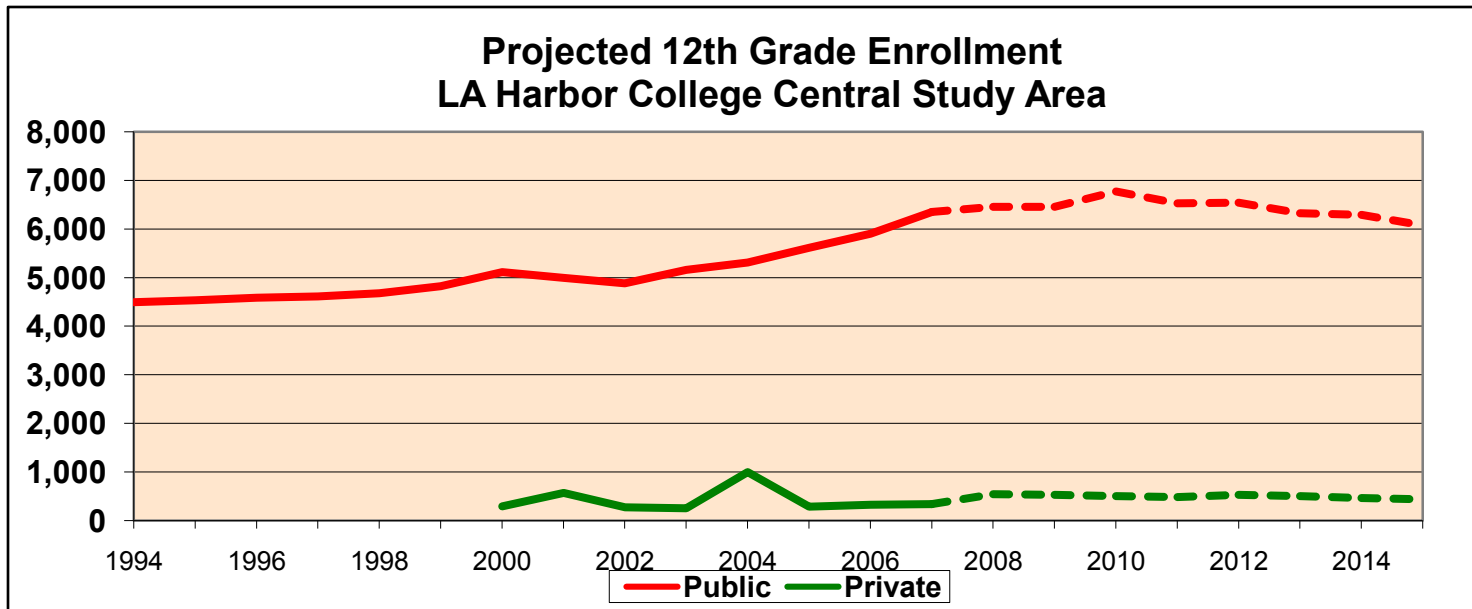


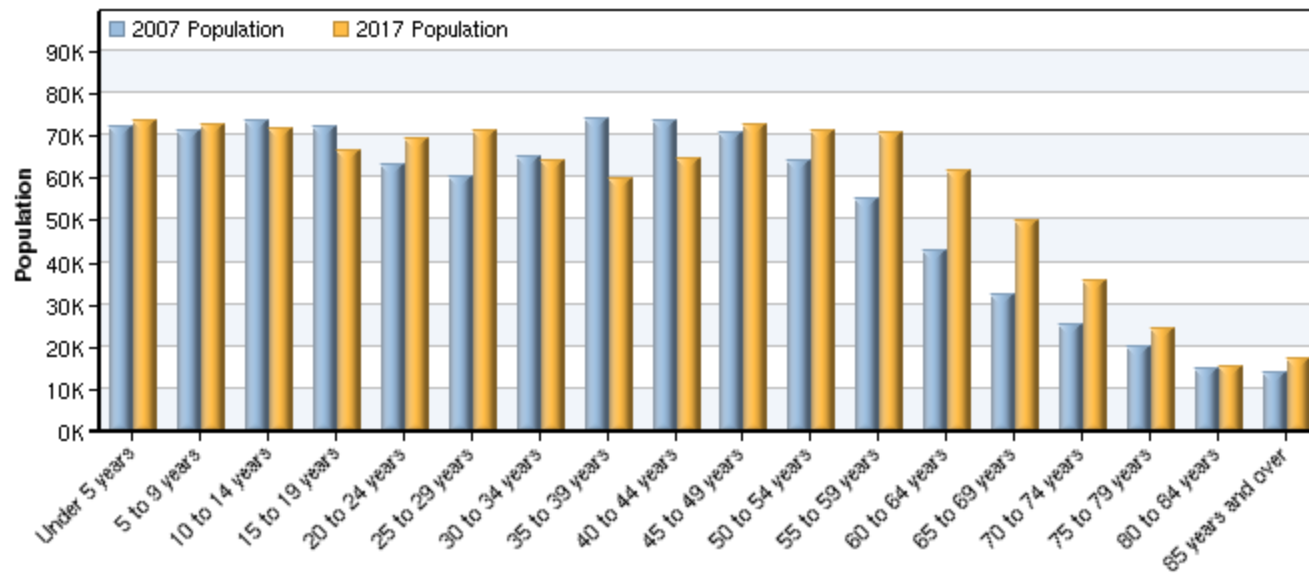
2007-2017 DEMOGRAPHIC TRENDS—Age Distribution—Part 1

The number of High School Seniors in our Service Area will peak in 2010 and then **decline**



2007-2017 DEMOGRAPHIC TRENDS—Age Distribution-Part 2

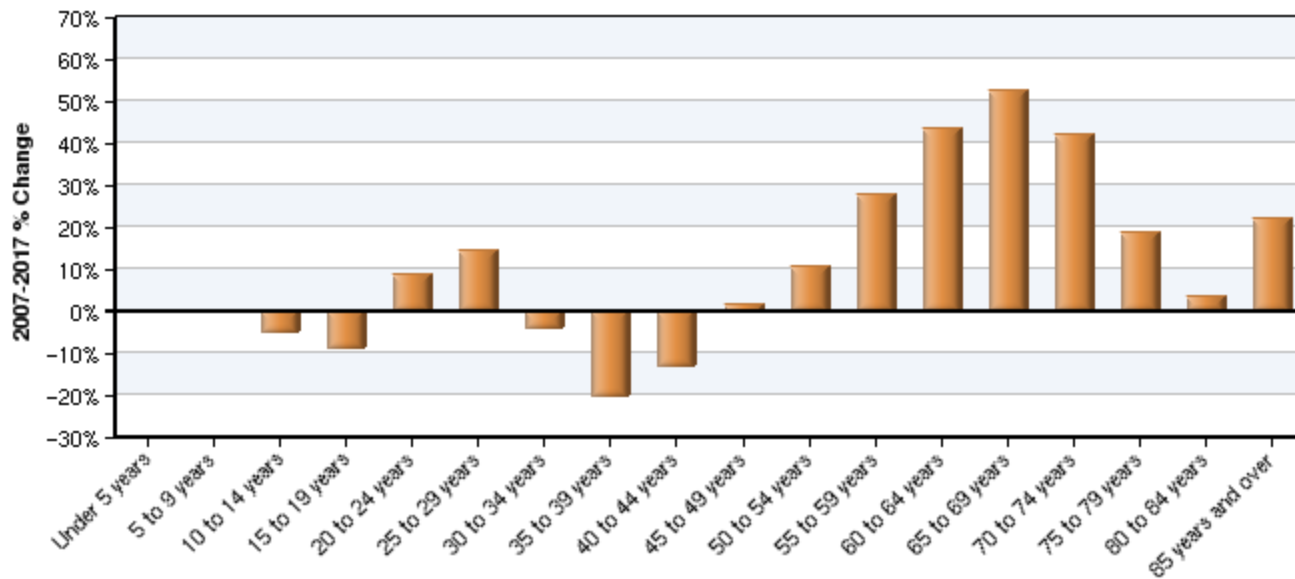
Our Service Area population is aging. The actual number of 15-19 year olds will decline over the next ten years



Source: EMSI Complete Employment - September 2007

2007-2017 DEMOGRAPHIC TRENDS—Age Distribution-Part 2 Alternate View

Our Service Area population is aging. The actual number of 15-19 year olds will decline over the next ten years



Source: EMSI Complete Employment - September 2007