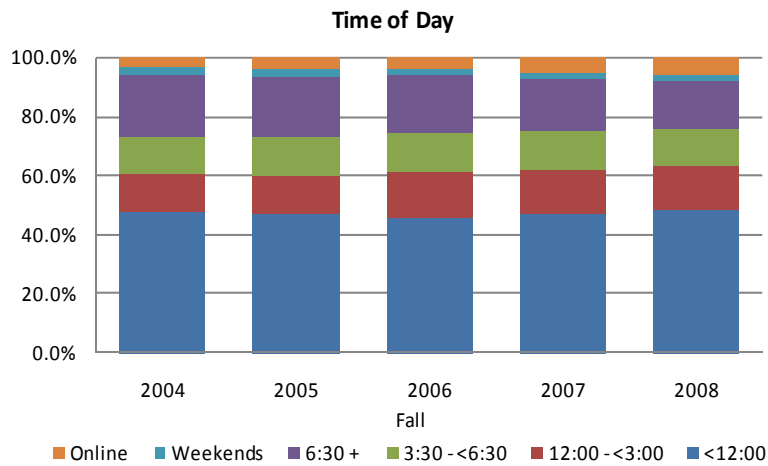
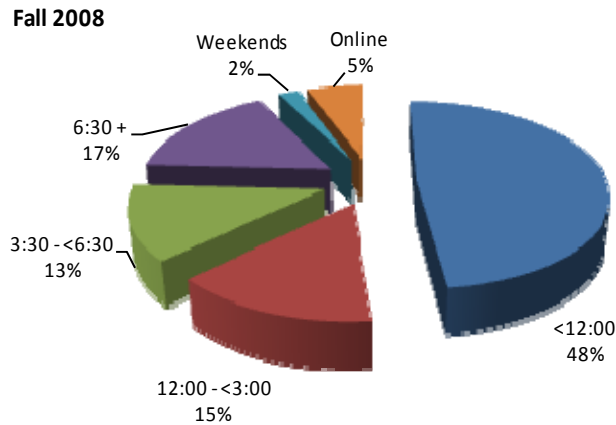


# STUDENT DEMOGRAPHICS

## TIME OF DAY



ENROLLMENT BY TIME OF DAY	Fall				
	2004	2005	2006	2007	2008
<12:00	47.9%	47.0%	45.8%	46.8%	48.4%
12:00 - <3:00	12.5%	13.1%	15.2%	15.4%	14.6%
3:30 - <6:30	12.9%	13.2%	13.4%	13.2%	12.7%
6:30 +	21.1%	20.5%	20.0%	17.6%	16.6%
Weekends	2.3%	2.6%	2.1%	2.0%	2.0%
Online	3.3%	3.6%	3.6%	5.0%	5.6%

*NOTE:* Credit students only. Figures are based on the percentages applied to First Census college enrollments.

Source: LACCD Office of Institutional Research and Information (<http://research.laccd.edu/research/>).  
2007 Data: Census Data Warehouse (CEN\_Rdb).