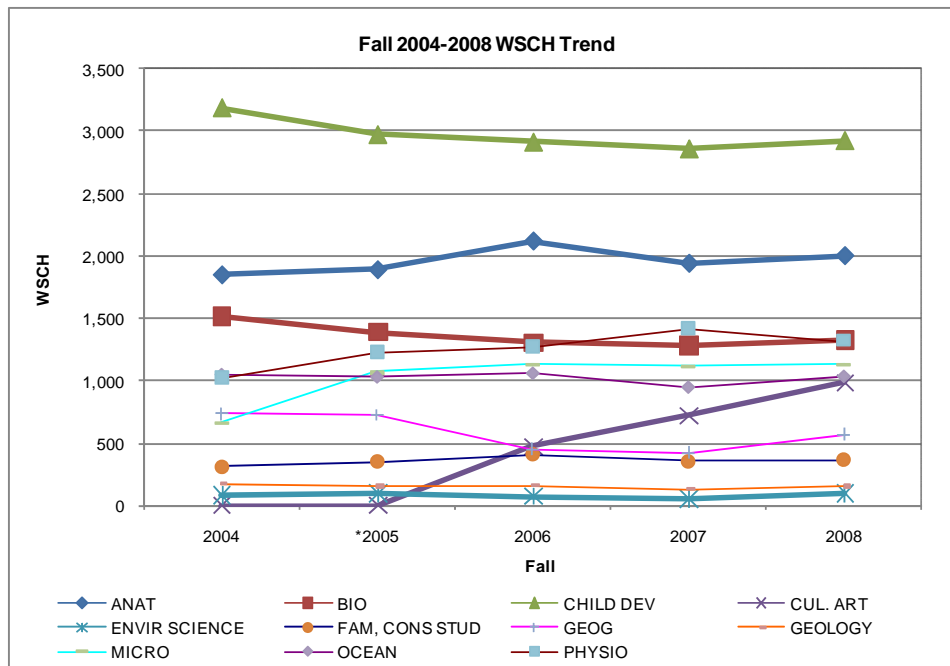


FALL 2004-2008 EFFICIENCY

SCIENCE, FAMILY AND CONSUMER STUDIES

Science, Family & Consumer Studies Division	WEEKLY STUDENT CONTACT HOURS				
	2004	*2005	2006	2007	2008
ANATOMY <i>Annual % Change</i>	1,848	1,888 2.2%	2,116 2.1%	1,939 -8.4%	2,000 3.1%
BIOLOGY <i>Annual % Change</i>	1,513	1,386 -8.4%	1,300 -6.2%	1,277 -1.8%	1,325 3.8%
CHILD DEVELOPMENT <i>Annual % Change</i>	3,188	2,974 -6.7%	2,914 -2.0%	2,861 -1.8%	2,927 2.3%
CULINARY ARTS <i>Annual % Change</i>	0	0	473	723 52.9%	985 36.2%
ENVR SCIENCE <i>Annual % Change</i>	77	93 20.8%	71 -24.1%	48 -31.9%	96 100.0%
FAMILY, CONS STUDIES <i>Annual % Change</i>	310	348 2.3%	407 17.0%	357 -2.3%	364 2.0%
GEOGRAPHY <i>Annual % Change</i>	739	730 -1.3%	449 -38.5%	420 -6.5%	572 36.2%
GEOLOGY <i>Annual % Change</i>	170	151 -11.3%	154 2.1%	131 -14.9%	151 15.3%
MICROBIOLOGY <i>Annual % Change</i>	668	1,068 59.8%	1,132 6.0%	1,122 -0.9%	1,132 0.9%
OCEANOGRAPHY <i>Annual % Change</i>	1,051	1,030 -2.0%	1,062 3.1%	945 -11.0%	1,036 9.6%
PHYSIOLOGY <i>Annual % Change</i>	1,024	1,231 20.3%	1,269 3.1%	1,417 11.7%	1,322 -6.7%
Division Total	10,587	10,898	11,346	11,241	11,910



*Fall 2005 may include PACE.

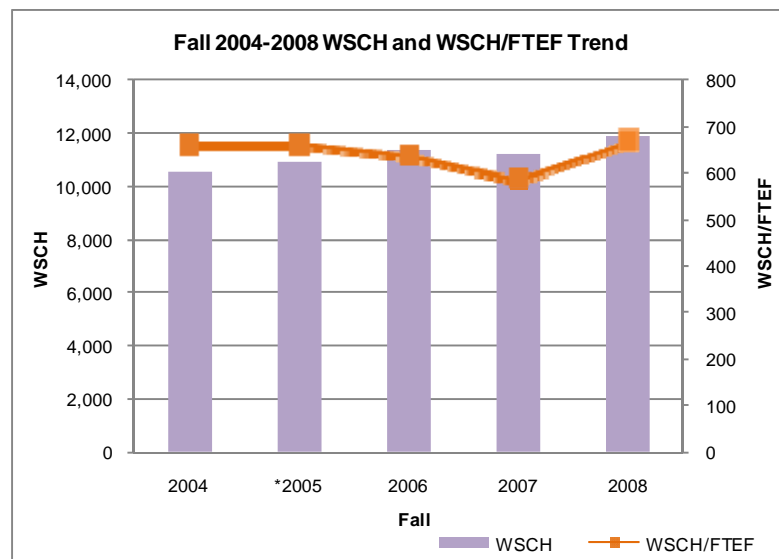
Source: Fall 2003-2005 and 2008 from LACCD Office of Institutional Research and Information (<http://research.laccd.edu/instructional-staffing/index.htm>).
Fall 2006-2007 from Business Warehouse (BW) Sections by Department (i21) and Sections by Discipline (i22) Reports.

FALL 2004-2008 EFFICIENCY

SCIENCE, FAMILY AND CONSUMER STUDIES

Science, Family and Consumer Studies Division	FACULTY (FULL-TIME EQUIVALENTS)						2008
	2004	*2005	2006	2007	R 08	H 08	
ANATOMY	2.0	2.2	2.2	2.2	0.8	1.6	2.4
BIOLOGY	3.0	2.6	2.7	3.6	1.0	1.8	2.8
CHILD DEVELOPMENT	4.7	4.9	5.2	5.0	2.8	1.8	4.6
CULINARY ARTS	0.0	0.0	1.2	1.3	0.0	1.3	1.3
ENVIR SCIENCE	0.2	0.2	0.2	0.2	0.2	0.0	0.2
FAMILY, CONS STUDIES	0.4	0.4	0.4	0.6	0.2	0.2	0.4
GEOGRAPHY	1.6	1.6	1.2	1.2	1.0	0.2	1.2
GEOLOGY	0.2	0.2	0.2	0.2	0.2	0.0	0.2
MICROBIOLOGY	1.0	1.4	1.4	1.4	1.0	0.4	1.4
OCEANOGRAPHY	1.4	1.4	1.4	1.4	0.6	0.8	1.4
PHYSIOLOGY	1.4	1.4	1.6	1.9	0.2	1.6	1.8
Division Total	15.9	16.4	17.7	19.1	8.0	9.7	17.7

Science, Family and Consumer Studies Division	WSCH per FACULTY FTE				
	2004	*2005	2006	2007	2008
ANATOMY	924	858	962	884	833
BIOLOGY	504	533	454	352	479
CHILD DEVELOPMENT	683	604	667	573	632
CULINARY ARTS			404	556	730
ENVIR SCIENCE	385	465	353	240	481
FAMILY, CONS STUDIES	715	802	940	565	981
GEOGRAPHY	462	456	374	350	477
GEOLOGY	850	753	769	657	753
MICROBIOLOGY	668	763	808	801	808
OCEANOGRAPHY	751	736	758	680	740
PHYSIOLOGY	731	889	793	736	735
Division Total	666	666	641	590	672
COLLEGE AVERAGE					568
STATE TARGET					525



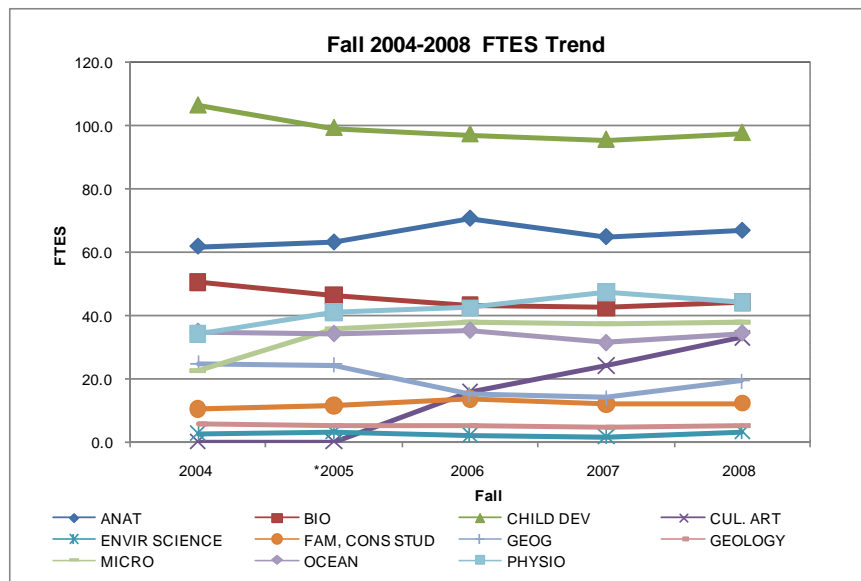
*Fall 2005 may include PACE.

Source: Fall 2003-2005 and 2008 from LACCD Office of Institutional Research and Information (<http://research.laccd.edu/instructional-staffing/index.htm>).
Fall 2006-2007 from Business Warehouse (BW) Sections by Department (i21) and Sections by Discipline (i22) Reports.

FALL 2004-2008 EFFICIENCY

SCIENCE, FAMILY AND CONSUMER STUDIES

Science, Family & Consumer Studies Division	FULL-TIME EQUIVALENT STUDENT				
	2004	*2005	2006	2007	2008
ANATOMY	61.6	62.9	70.5	64.6	66.7
<i>Annual % Change</i>		2.2%	12.1%	-8.4%	3.1%
BIOLOGY	50.4	46.2	43.3	42.6	44.2
<i>Annual % Change</i>		-8.4%	-6.2%	-18%	3.8%
CHILD DEVELOPMENT	106.3	99.1	97.1	95.4	97.6
<i>Annual % Change</i>		-6.7%	-2.0%	-18%	2.3%
CULINARY ARTS	0.0	0.0	15.8	24.1	32.8
<i>Annual % Change</i>				52.9%	36.2%
ENVIR SCIENCE	2.6	3.1	2.4	1.6	3.2
<i>Annual % Change</i>		20.8%	-24.1%	-31.9%	100.0%
FAMILY, CONS STUDIES	10.3	11.6	13.6	11.9	12.1
<i>Annual % Change</i>		12.3%	17.0%	-12.3%	2.0%
GEOGRAPHY	24.6	24.3	15.0	14.0	19.1
<i>Annual % Change</i>		-1.3%	-38.5%	-6.5%	36.2%
GEOLOGY	5.7	5.0	5.1	4.4	5.0
<i>Annual % Change</i>		-11.3%	2.1%	-14.9%	15.3%
MICROBIOLOGY	22.3	35.6	37.7	37.4	37.7
<i>Annual % Change</i>		59.8%	6.0%	-0.9%	0.9%
OCEANOGRAPHY	35.0	34.3	35.4	31.5	34.5
<i>Annual % Change</i>		-2.0%	3.1%	-11.0%	9.6%
PHYSIOLOGY	34.1	41.0	42.3	47.2	44.1
<i>Annual % Change</i>		20.3%	3.1%	11.7%	-6.7%
Division Total	352.9	363.3	378.2	374.7	397.0



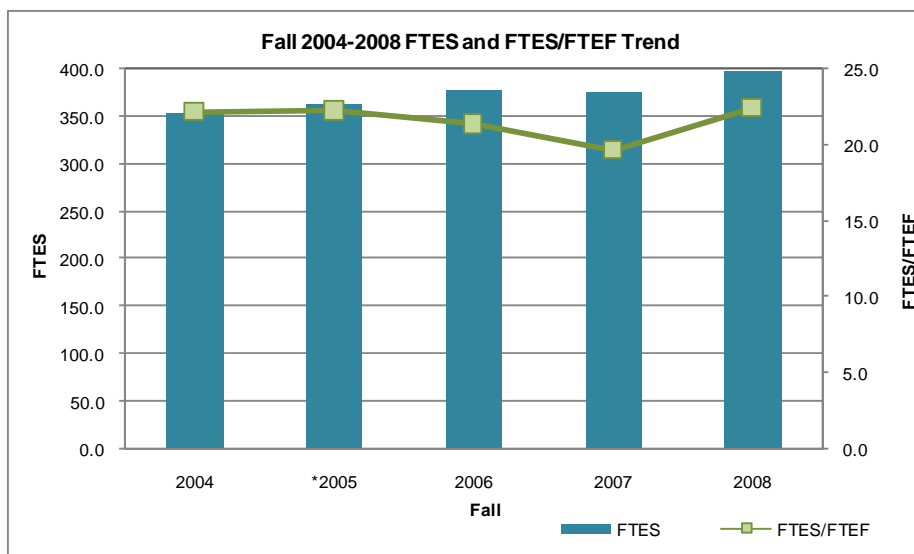
*Fall 2005 may include PACE.

Source: Fall 2003-2005 and 2008 from LACCD Office of Institutional Research and Information (<http://research.laccd.edu/instructional-staffing/index.htm>).
Fall 2006-2007 from Business Warehouse (BW) Sections by Department (i21) and Sections by Discipline (i22) Reports.

FALL 2004-2008 EFFICIENCY

SCIENCE, FAMILY AND CONSUMER STUDIES

Science, Family and Consumer Studies Division	FTES per FACULTY FTE				
	2004	*2005	2006	2007	2008
ANATOMY	30.8	28.6	32.1	29.5	27.8
BIOLOGY	16.8	17.8	15.1	11.8	16.0
CHILD DEVELOPMENT	22.8	20.1	18.7	19.1	21.1
CULINARY ARTS			15.8	18.5	24.3
ENVIR SCIENCE	12.8	15.5	11.8	8.0	16.0
FAMILY, CONS STUDIES	23.8	26.8	31.3	18.8	32.7
GEOGRAPHY	15.4	15.2	12.5	11.7	15.9
GEOLOGY	28.3	25.1	25.6	21.9	25.1
MICROBIOLOGY	22.3	25.4	26.9	26.7	26.9
OCEANOGRAPHY	25.0	24.5	25.3	22.6	24.7
PHYSIOLOGY	24.4	29.3	26.4	24.5	24.5
Division Total	22.2	22.2	21.4	19.7	22.4
COLLEGE AVERAGE					18.9



Science, Family and Consumer Studies Division	Class Size				
	2004	*2005	2006	2007	2008
ANATOMY	61.6	57.2	64.1	58.9	55.6
BIOLOGY	33.4	35.5	30.2	23.5	32.0
CHILD DEVELOPMENT	45.5	40.3	44.5	38.2	42.1
CULINARY ARTS			19.3	26.5	34.8
ENVIR SCIENCE	25.6	31.0	23.5	16.0	32.1
FAMILY, CONS STUDIES	47.7	53.5	62.7	37.6	65.4
GEOGRAPHY	30.8	30.4	24.9	23.3	31.8
GEOLOGY	56.6	50.2	51.3	43.8	50.2
MICROBIOLOGY	44.5	50.8	53.9	53.4	53.9
OCEANOGRAPHY	50.0	49.1	50.6	45.3	49.3
PHYSIOLOGY	48.7	58.6	52.9	49.0	49.0
Division Total	44.3	44.4	46.3	38.6	43.5
COLLEGE AVERAGE					37.6

*Fall 2005 may include PACE.

Source: Fall 2003-2005 and 2008 from LACCD Office of Institutional Research and Information (<http://research.laccd.edu/instructional-staffing/index.htm>).
Fall 2006-2007 from Business Warehouse (BW) Sections by Department (i21) and Sections by Discipline (i22) Reports.