

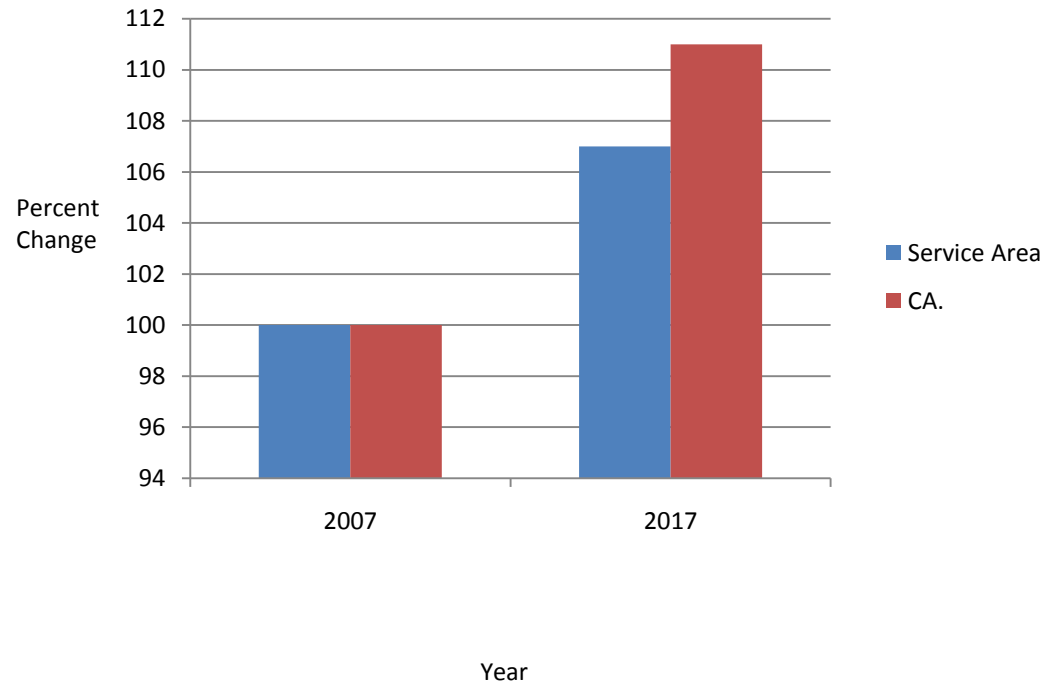
DEMOGRAPHY

Numbers, Age and Ethnicity

- Concrete Example—HS Capture Rates:
 - LAHC 2006 Capture Rate was 40.5%
 - LAVC 2006 Capture Rate was 32.3%
 - LAHC enrolled 478 students
 - LAVC enrolled 1,013 students

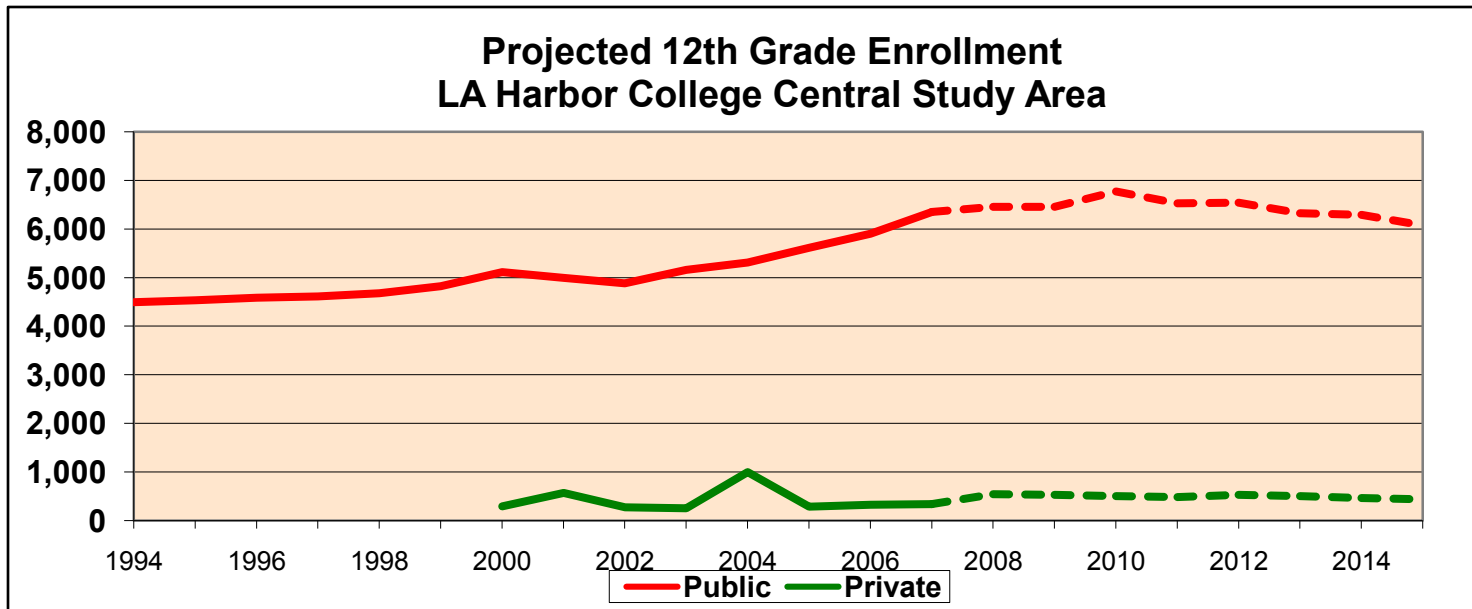
2007-2017 DEMOGRAPHIC TRENDS--Numbers

Our Service Area is projected to grow by 7%, the state is projected to grow by 11%



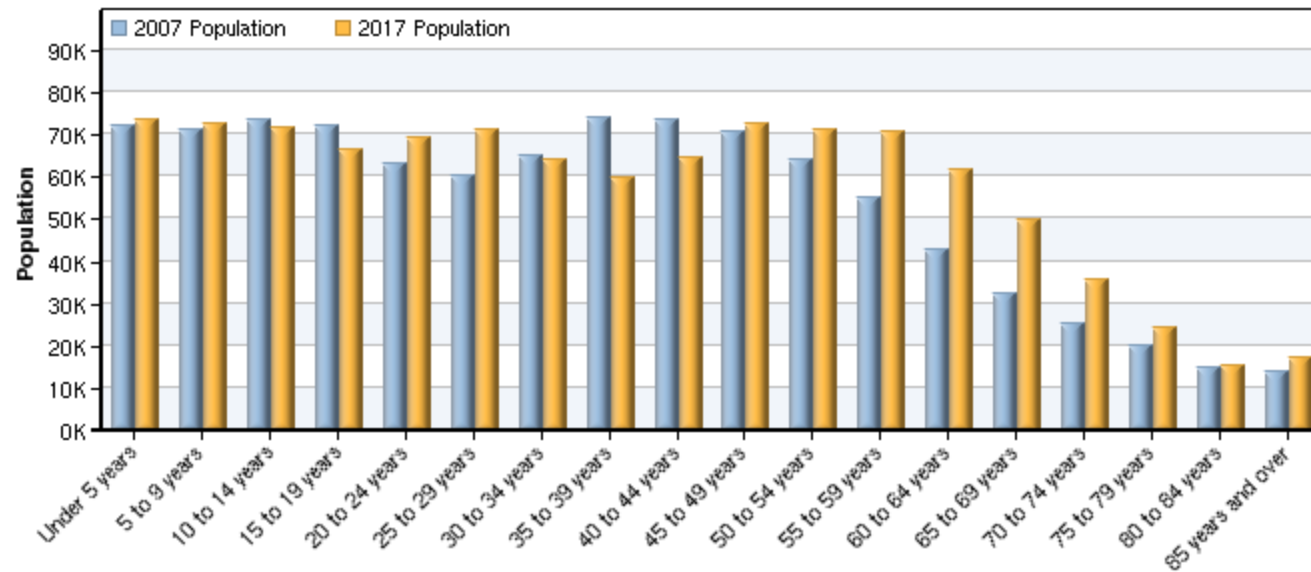
2007-2017 DEMOGRAPHIC TRENDS—Age Distribution—Part 1

The number of High School Seniors in our Service Area will peak in 2010 and then **decline**



2007-2017 DEMOGRAPHIC TRENDS—Age Distribution-Part 2

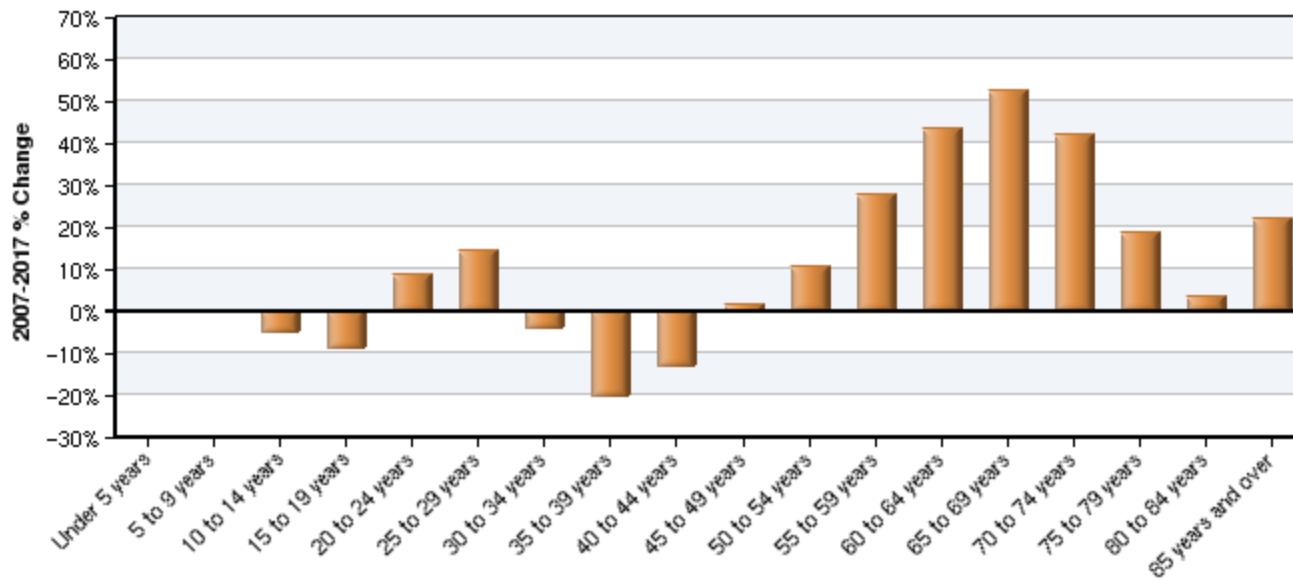
Our Service Area population is aging



Source: EMSI Complete Employment - September 2007

2007-2017 DEMOGRAPHIC TRENDS—Age Distribution-Part 2 Alternate View

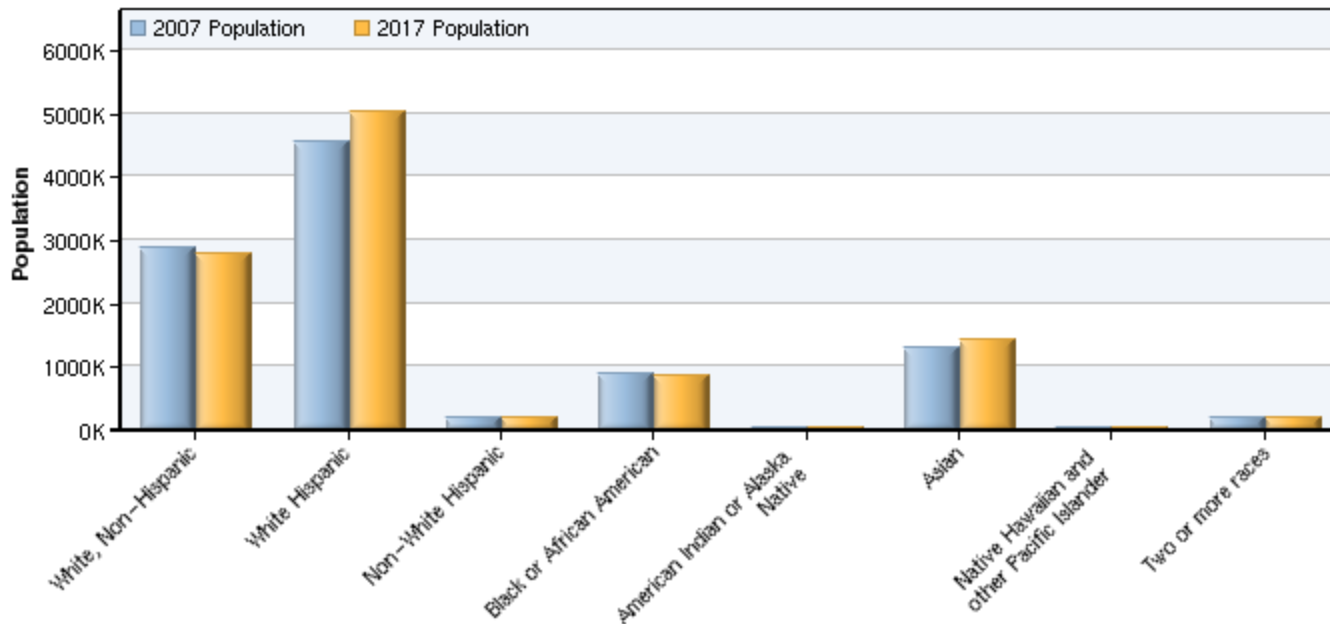
Our Service Area population is aging



Source: EMSI Complete Employment - September 2007

2007-2017 DEMOGRAPHIC TRENDS—Ethnicity

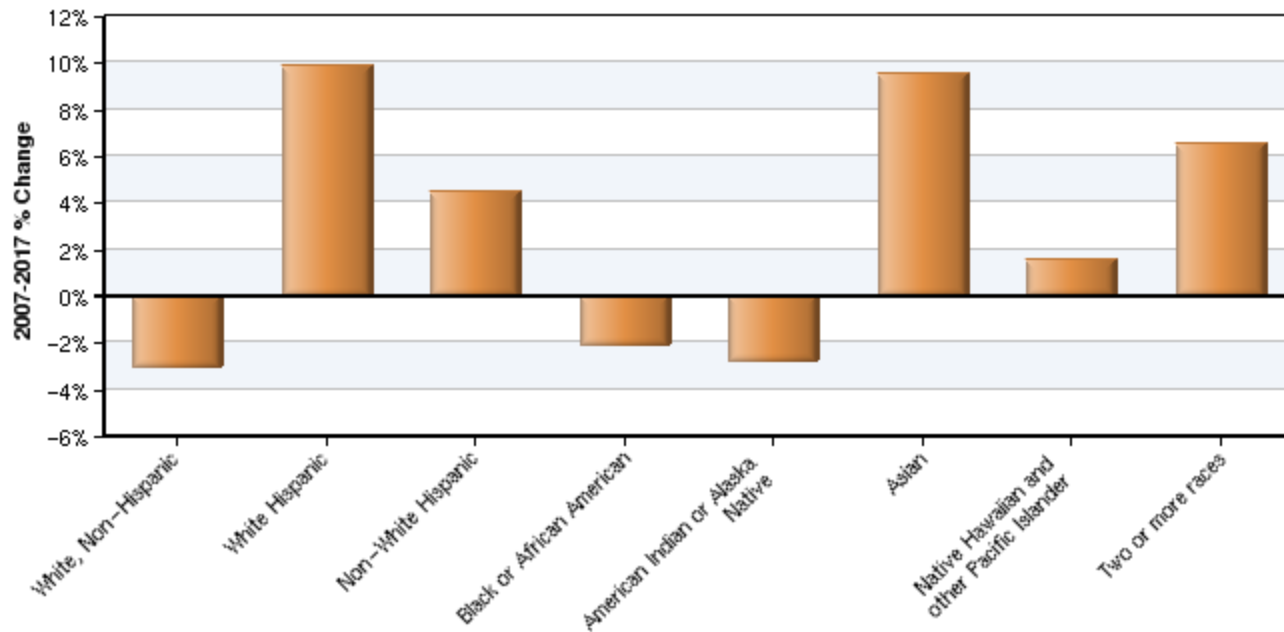
In our Service Area, current trends continue



Source: EMSI Complete Employment - September 2007

2007-2017 DEMOGRAPHIC TRENDS—Ethnicity Alternate View

In our Service Area, current trends continue



Source: EMSI Complete Employment - September 2007

2007-2017 DEMOGRAPHIC TRENDS--END