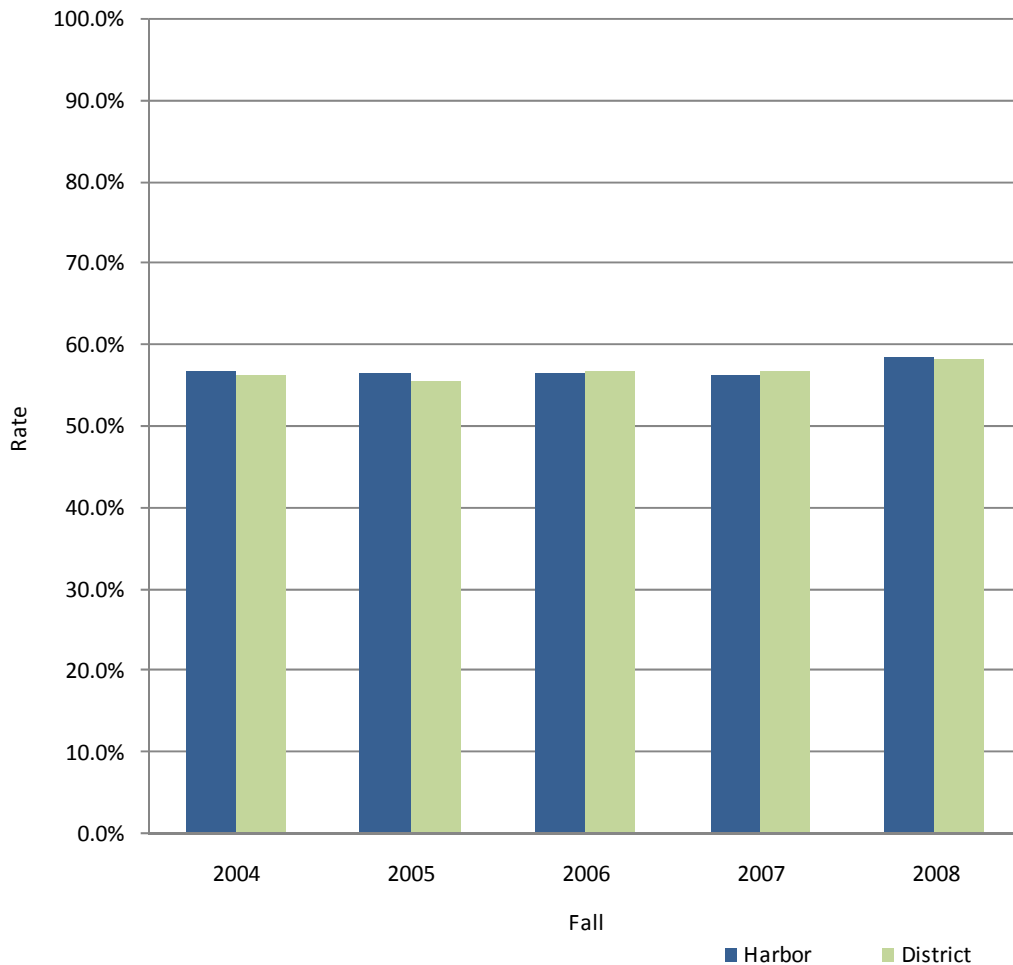


PERFORMANCE AND OUTCOMES

FALL-TO-FALL PERSISTENCE RATE

Fall	Harbor	District
2001	56.9%	55.7%
2002	54.3%	54.7%
2003	54.9%	55.6%
2004	56.9%	56.2%
2005	56.6%	55.6%
2006	56.5%	56.8%
2007	56.4%	56.8%
2008	58.5%	58.2%

Fall to Fall Persistence Rate Comparison



Source: LACCD Office of Institutional Research and Information.