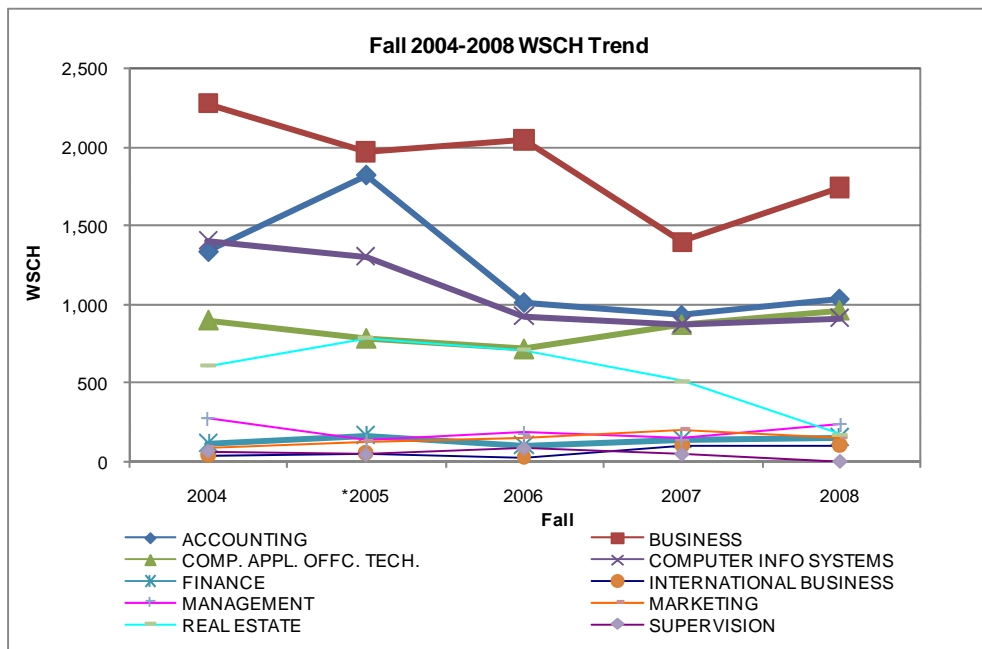


FALL 2004-2008 EFFICIENCY

BUSINESS

Business Division	WEEKLY STUDENT CONTACT HOURS				
	2004	*2005	2006	2007	2008
ACCOUNTING	1,331	1,815	1,010	929	1,032
<i>Annual % Change</i>		36.4%	-44.4%	-8.0%	11%
BUSINESS	2,275	1,970	2,045	1,398	1,743
<i>Annual % Change</i>		-13.4%	3.8%	-31.6%	24.7%
COMP. APPL. OFFC. TECH.	896	782	715	868	958
<i>Annual % Change</i>		-12.7%	-8.6%	21.4%	10.4%
COMPUTER INFO SYSTEMS	1,397	1,296	923	873	910
<i>Annual % Change</i>		-7.2%	-28.8%	-5.4%	4.2%
FINANCE	118	163	103	144	151
<i>Annual % Change</i>		38.1%	-37.3%	40.4%	4.9%
INTERNATIONAL BUSINESS	41	54	26	104	99
<i>Annual % Change</i>		33.8%	-52.9%	305.5%	-4.8%
MANAGEMENT	275	131	183	141	236
<i>Annual % Change</i>		-52.1%	39.1%	-22.8%	67.4%
MARKETING	90	126	154	202	153
<i>Annual % Change</i>		40.1%	22.3%	31.3%	-24.3%
REAL ESTATE	611	784	710	512	173
<i>Annual % Change</i>		28.2%	-9.4%	-27.9%	-66.2%
SUPERVISION	68	45	87	48	0
<i>Annual % Change</i>		-33.9%	93.9%	-44.8%	-100.0%
Division Total	7,361	7,102	5,954	5,220	5,453



*Fall 2005 may include PACE.

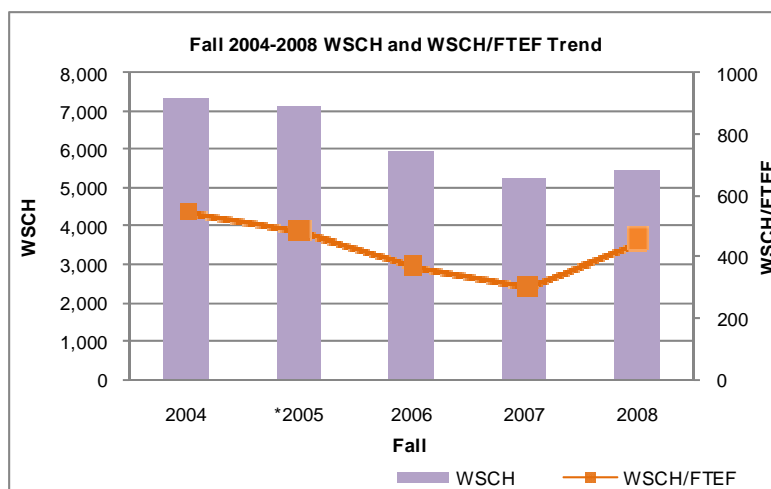
Source: Fall 2003-2005 and 2008 from LACCD Office of Institutional Research and Information (<http://research.laccd.edu/instructional-staffing/index.htm>).
Fall 2006-2007 from Business Warehouse (BW) Sections by Department (i21) and Sections by Discipline (i22) Reports.

FALL 2004-2008 EFFICIENCY

BUSINESS

Business Division	FACULTY (FULL-TIME EQUIVALENTS)						2008
	2004	*2005	2006	2007	R 08	H 08	
ACCOUNTING	2.4	3.5	2.7	2.9	1.0	1.0	2.0
BUSINESS	3.3	3.4	4.2	3.6	0.6	2.3	2.9
COMP. APPL. OFFC. TECH.	2.1	2.1	2.6	3.0	1.0	1.8	2.8
COMPUTER INFO SYSTEMS	2.9	2.9	2.6	2.6	1.3	0.7	1.9
FINANCE	0.4	0.4	0.4	0.6	0.0	0.4	0.4
INTERNATIONAL BUSINESS	0.2	0.2	0.2	0.8	0.0	0.2	0.2
MANAGEMENT	0.4	0.4	0.8	0.6	0.0	0.6	0.6
MARKETING	0.2	0.4	0.6	0.6	0.0	0.4	0.4
REAL ESTATE	0.8	1.2	1.4	1.8	0.0	0.6	0.6
SUPERVISION	0.2	0.2	0.2	0.2	0.0	0.0	0.0
Division Total	12.9	14.5	15.7	16.7	3.9	8.0	11.8

Business Division	WSCH per FACULTY FTE				
	2004	*2005	2006	2007	2008
ACCOUNTING	564	513	373	317	516
BUSINESS	689	579	529	392	606
COMP. APPL. OFFC. TECH.	293	271	278	290	338
COMPUTER INFO SYSTEMS	491	486	350	339	473
FINANCE	296	409	256	240	377
INTERNATIONAL BUSINESS	204	272	128	131	510
MANAGEMENT	686	329	228	235	393
MARKETING	449	314	256	337	382
REAL ESTATE	764	653	507	284	289
SUPERVISION	339	224	433	240	
Division Total	553	493	380	313	461
<i>COLLEGE AVERAGE</i>					<i>568</i>
<i>STATE TARGET</i>					<i>525</i>



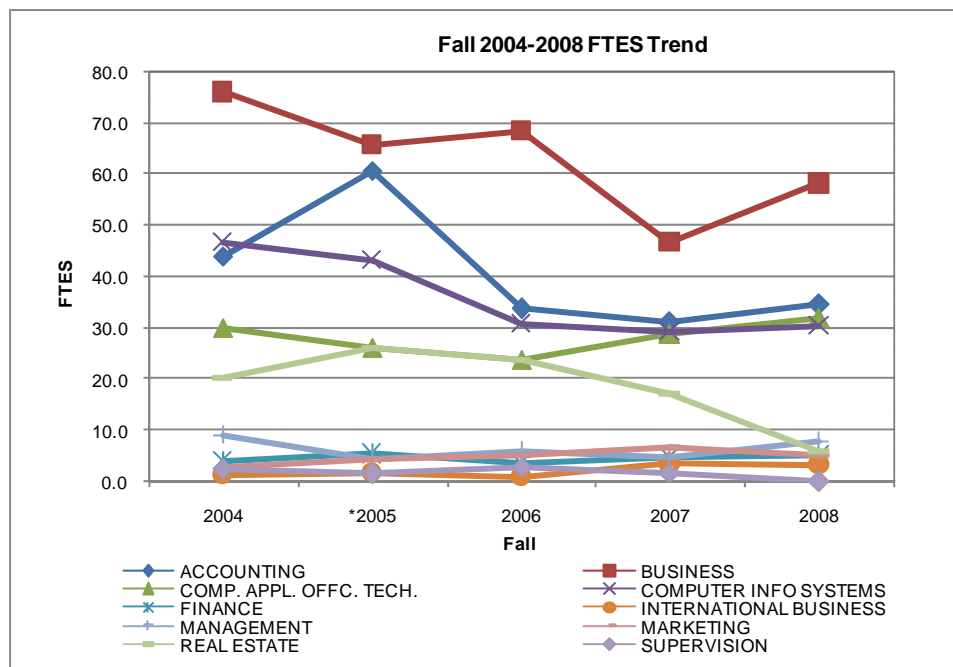
*Fall 2005 may include PACE.

Source: Fall 2003-2005 and 2008 from LACCD Office of Institutional Research and Information (<http://research.laccd.edu/instructional-staffing/index.htm>).
Fall 2006-2007 from Business Warehouse (BW) Sections by Department (i21) and Sections by Discipline (i22) Reports.

FALL 2004-2008 EFFICIENCY

BUSINESS

Business Division	FULL-TIME EQUIVALENT STUDENT				
	2004	*2005	2006	2007	2008
ACCOUNTING	44.0	60.5	33.7	31.0	34.4
<i>Annual % Change</i>		36.4%	-44.4%	-100.0%	11.0%
BUSINESS	75.8	65.7	68.2	46.6	58.1
<i>Annual % Change</i>		-13.4%	3.8%	-100.0%	24.7%
COMP. APPL. OFFC. TECH.	29.9	26.1	23.8	28.9	31.9
<i>Annual % Change</i>		-12.7%	-8.5%	-100.0%	10.5%
COMPUTER INFO SYSTEMS	46.6	43.2	30.8	29.1	30.3
<i>Annual % Change</i>		-7.2%	-28.8%	-100.0%	4.2%
FINANCE	3.9	5.4	3.4	4.8	5.0
<i>Annual % Change</i>		38.1%	-37.3%	-100.0%	4.9%
INTERNATIONAL BUSINESS	1.4	1.8	0.9	3.5	3.3
<i>Annual % Change</i>		33.8%	-52.9%	-100.0%	-5.7%
MANAGEMENT	9.2	4.4	6.1	4.7	7.9
<i>Annual % Change</i>		-52.1%	39.1%	-100.0%	67.4%
MARKETING	3.0	4.2	5.1	6.7	5.1
<i>Annual % Change</i>		40.1%	22.3%	-100.0%	-23.9%
REAL ESTATE	20.4	26.1	23.7	17.1	5.8
<i>Annual % Change</i>		28.2%	-9.4%	-100.0%	-66.3%
SUPERVISION	2.3	1.5	2.9	1.6	0.0
<i>Annual % Change</i>		-33.9%	92.8%	-100.0%	-100.0%
Division Total	245.4	236.7	198.5	174.0	181.8



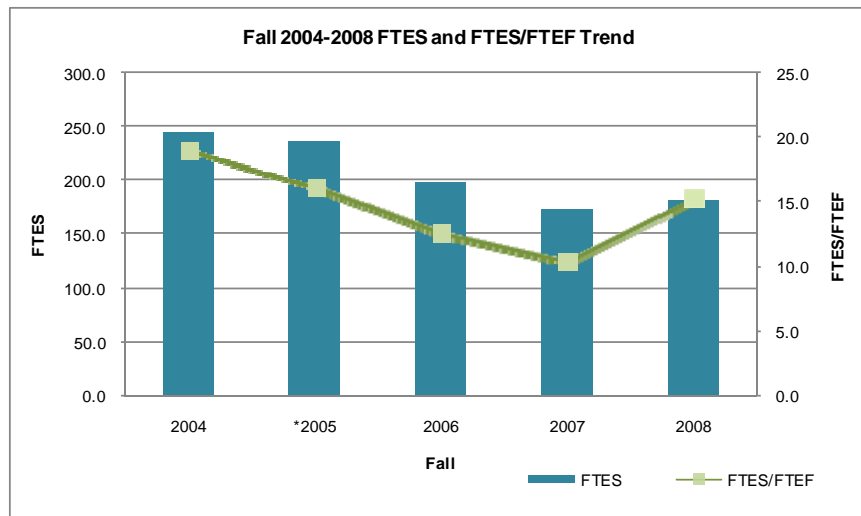
*Fall 2005 may include PACE.

Source: Fall 2003-2005 and 2008 from LACCD Office of Institutional Research and Information (<http://research.laccd.edu/instructional-staffing/index.htm>).
Fall 2006-2007 from Business Warehouse (BW) Sections by Department (i21) and Sections by Discipline (i22) Reports.

FALL 2004-2008 EFFICIENCY

BUSINESS

Business Division	FTES per FACULTY FTE				
	2004	*2005	2006	2007	2008
ACCOUNTING	18.6	17.1	12.4	10.6	17.2
BUSINESS	23.0	19.3	16.4	13.1	20.2
COMP. APPL. OFFC. TECH.	14.0	12.4	9.3	9.7	11.3
COMPUTER INFO SYSTEMS	16.4	16.2	11.7	11.3	15.8
FINANCE	9.9	13.6	8.5	8.0	12.6
INTERNATIONAL BUSINESS	6.8	9.1	4.3	4.3	17.0
MANAGEMENT	22.9	11.0	7.6	7.8	13.1
MARKETING	15.0	10.5	8.5	11.2	12.7
REAL ESTATE	25.5	21.8	16.9	9.5	9.6
SUPERVISION	11.3	7.5	14.4	8.0	
Division Total	19.1	16.3	12.7	10.4	15.4
COLLEGE AVERAGE					18.9



Business Division	Class Size				
	2004	*2005	2006	2007	2008
ACCOUNTING	37.6	34.2	24.9	21.1	34.4
BUSINESS	46.8	38.6	35.3	26.2	40.4
COMP. APPL. OFFC. TECH.	24.8	18.5	23.5	19.4	22.5
COMPUTER INFO SYSTEMS	32.7	32.4	23.4	22.6	31.5
FINANCE	19.7	27.2	17.1	16.0	25.1
INTERNATIONAL BUSINESS	13.6	18.2	8.6	8.7	34.0
MANAGEMENT	45.8	21.9	15.2	15.7	26.2
MARKETING	30.0	21.0	17.1	22.4	25.5
REAL ESTATE	50.9	43.5	33.8	19.0	19.2
SUPERVISION	22.6	15.0	28.9	16.0	
Division Total	37.6	32.9	26.2	20.9	30.7
COLLEGE AVERAGE					37.6

*Fall 2005 may include PACE.

Source: Fall 2003-2005 and 2008 from LACCD Office of Institutional Research and Information (<http://research.laccd.edu/instructional-staffing/index.htm>).
Fall 2006-2007 from Business Warehouse (BW) Sections by Department (i21) and Sections by Discipline (i22) Reports.