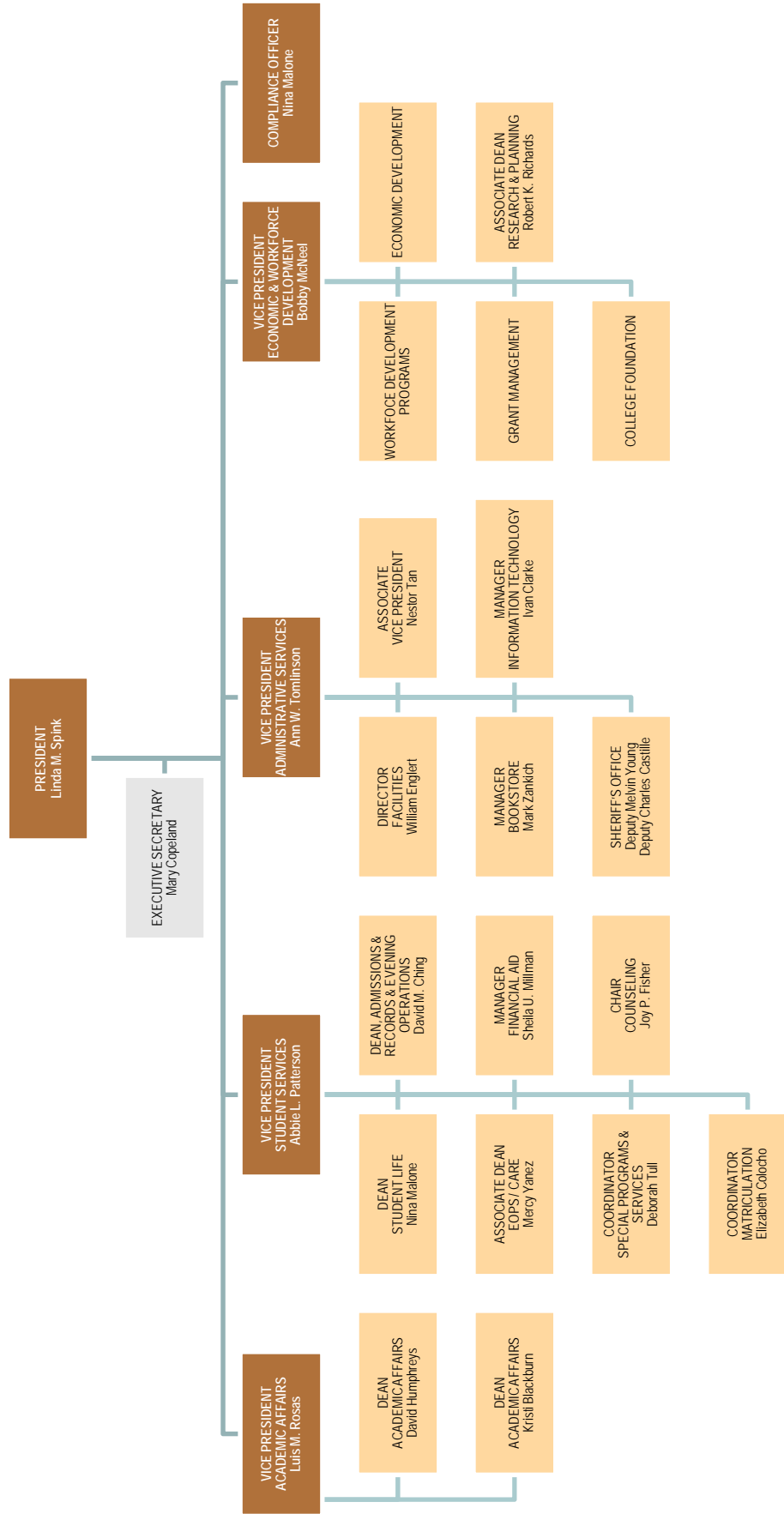


# ADDENDUM

## COLLEGE ORGANIZATION

President's Office  
Chart 1



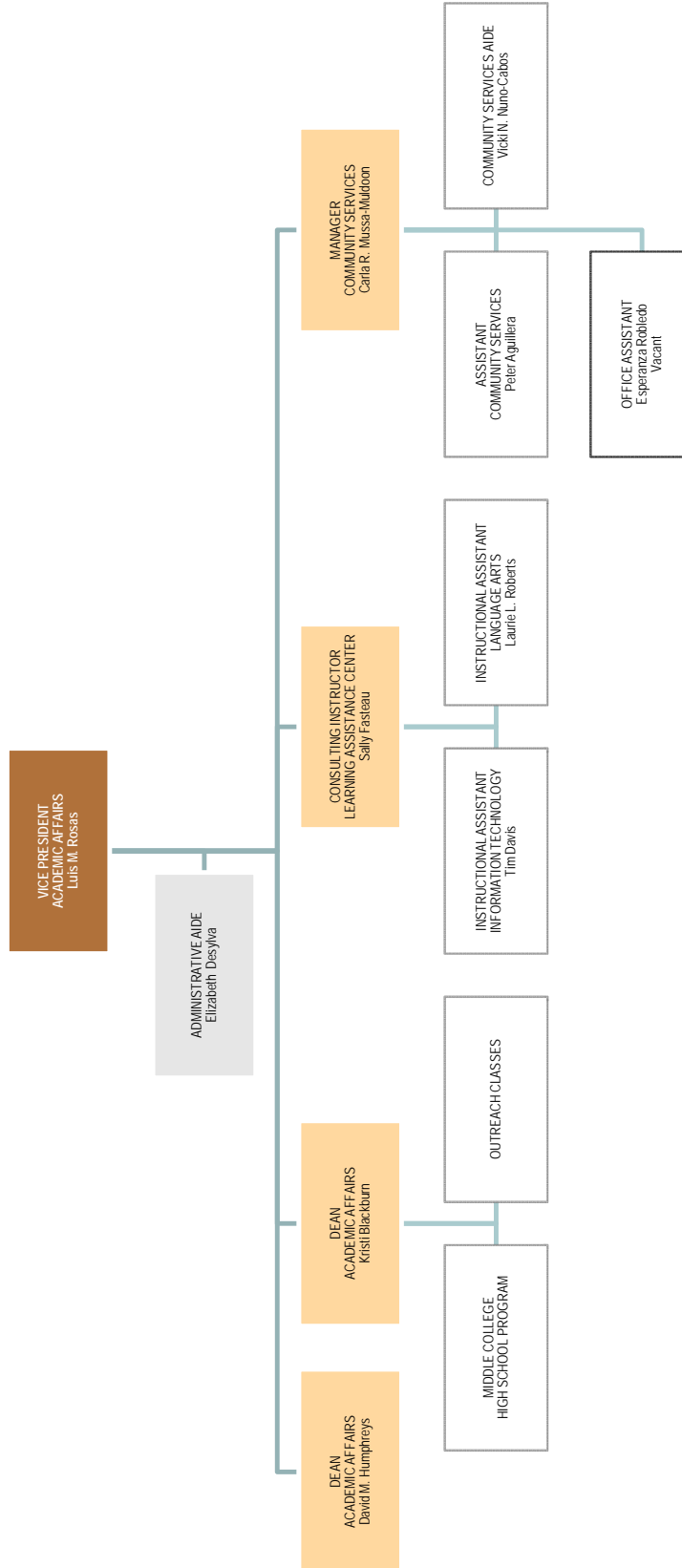
As of June 30, 2009

# ADDENDUM

## COLLEGE ORGANIZATION

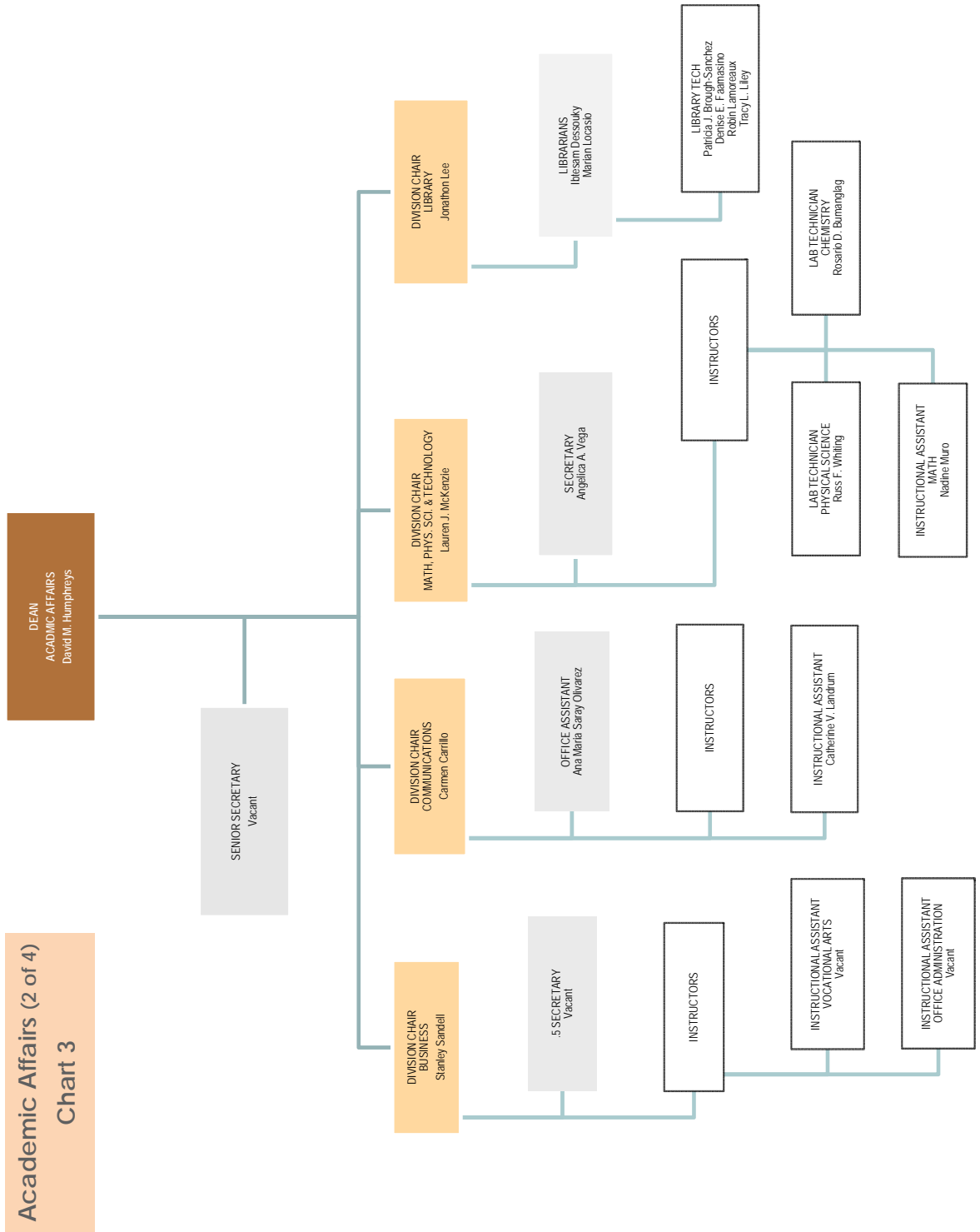
Academic Affairs (1 of 4)

Chart 2



As of June 30, 2009

# ADDENDUM COLLEGE ORGANIZATION

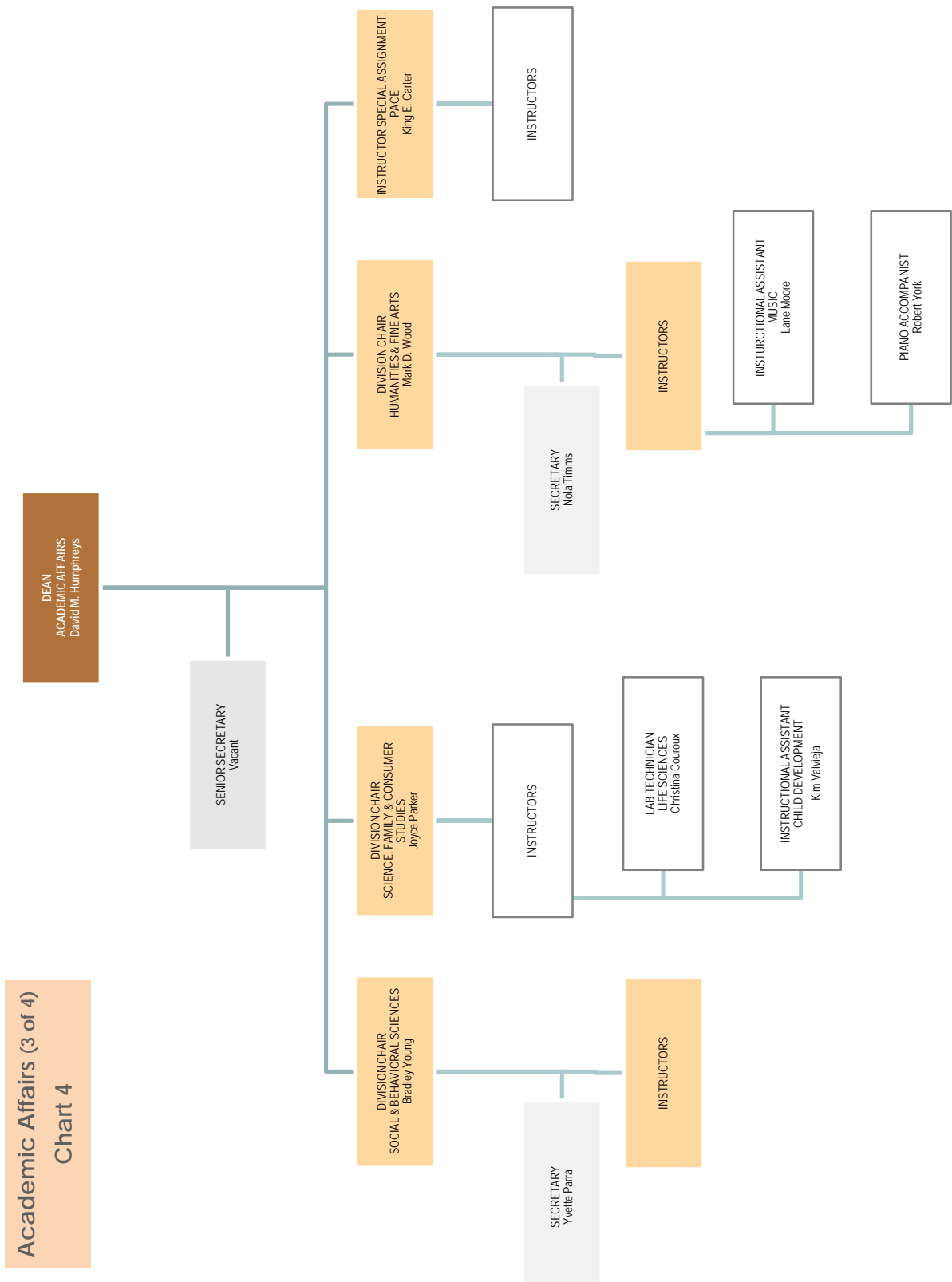


Academic Affairs (2 of 4)  
Chart 3

As of June 30, 2009

# ADDENDUM

## COLLEGE ORGANIZATION



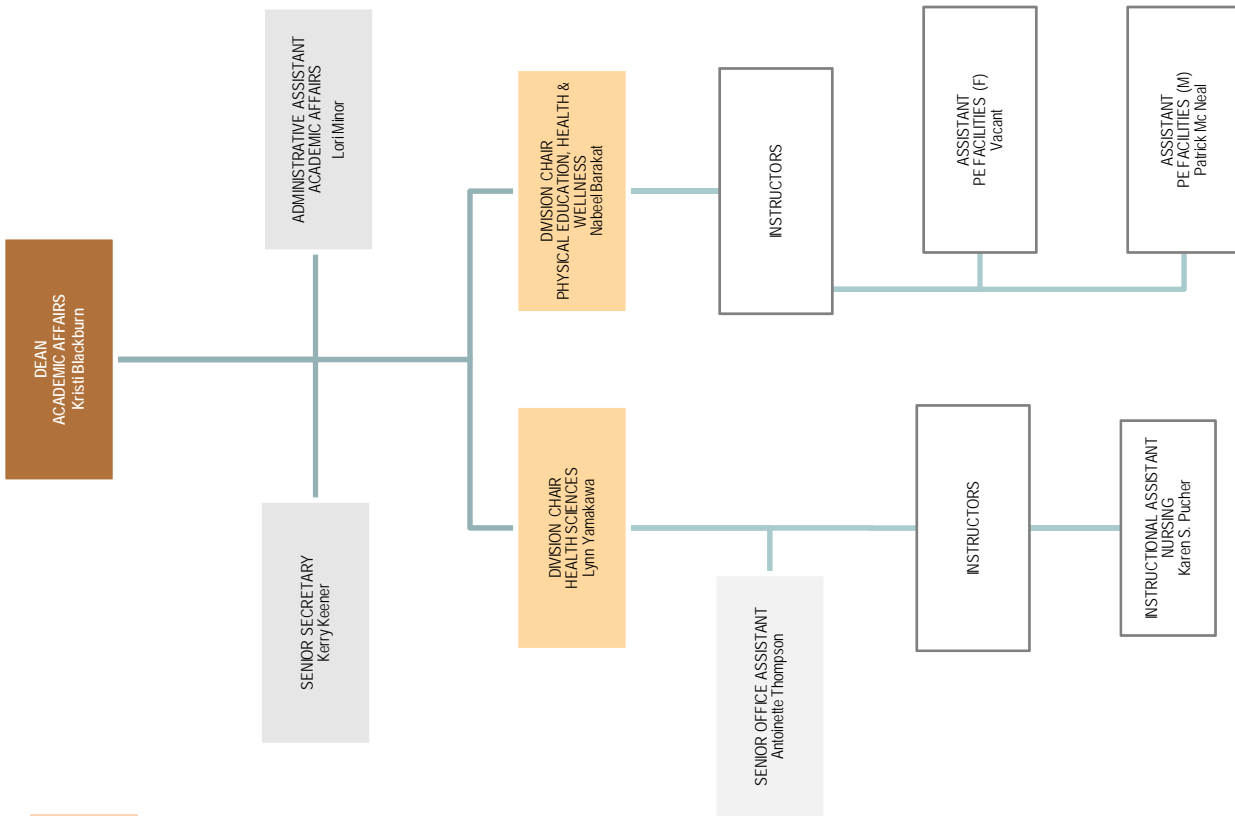
**Academic Affairs (3 of 4)**  
**Chart 4**

As of June 30, 2009

# ADDENDUM

## COLLEGE ORGANIZATION

Academic Affairs (4 of 4)  
Chart 5

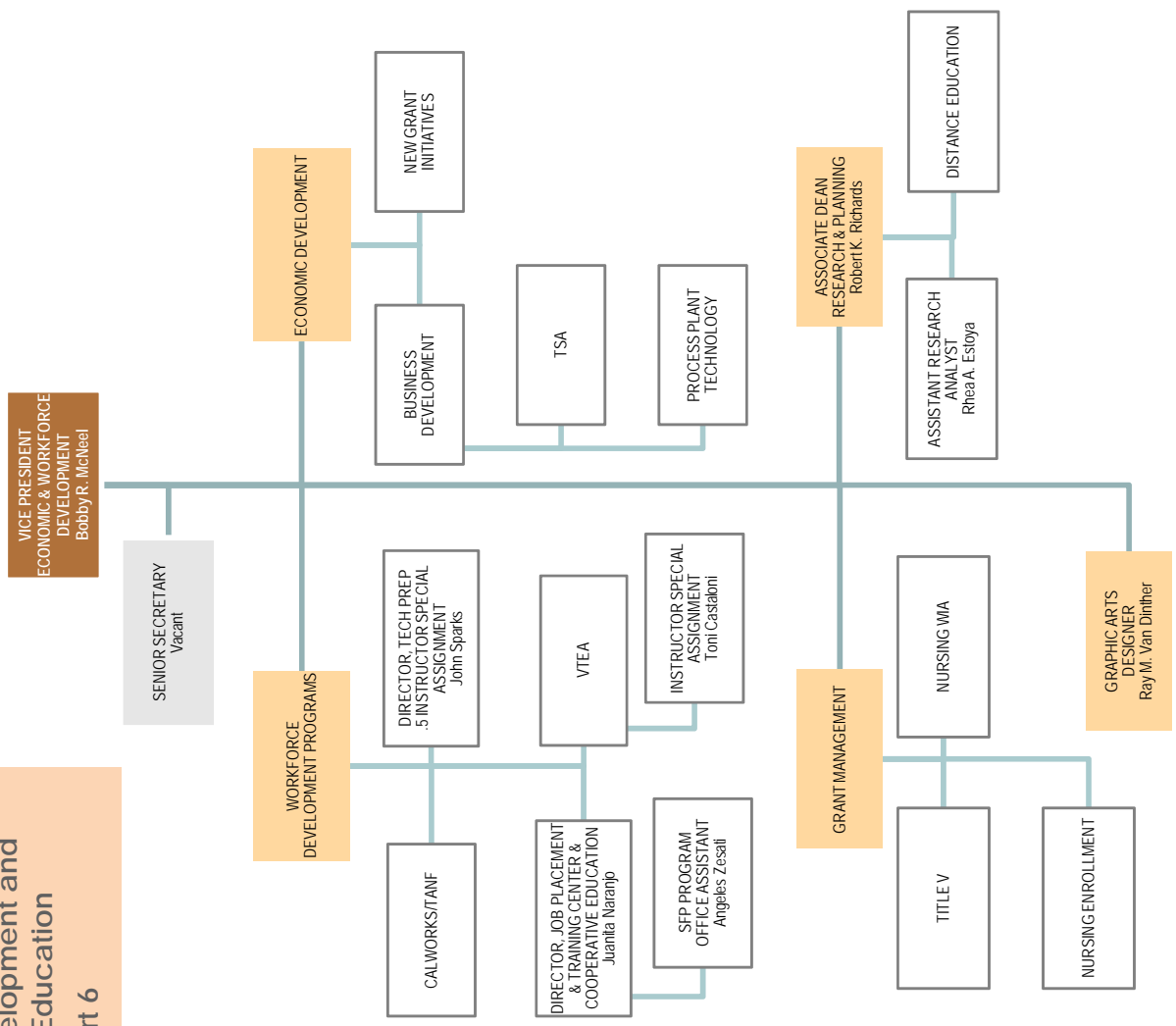


As of June 30, 2009

# ADDENDUM

## COLLEGE ORGANIZATION

**Economic Development and Workforce Education**  
Chart 6

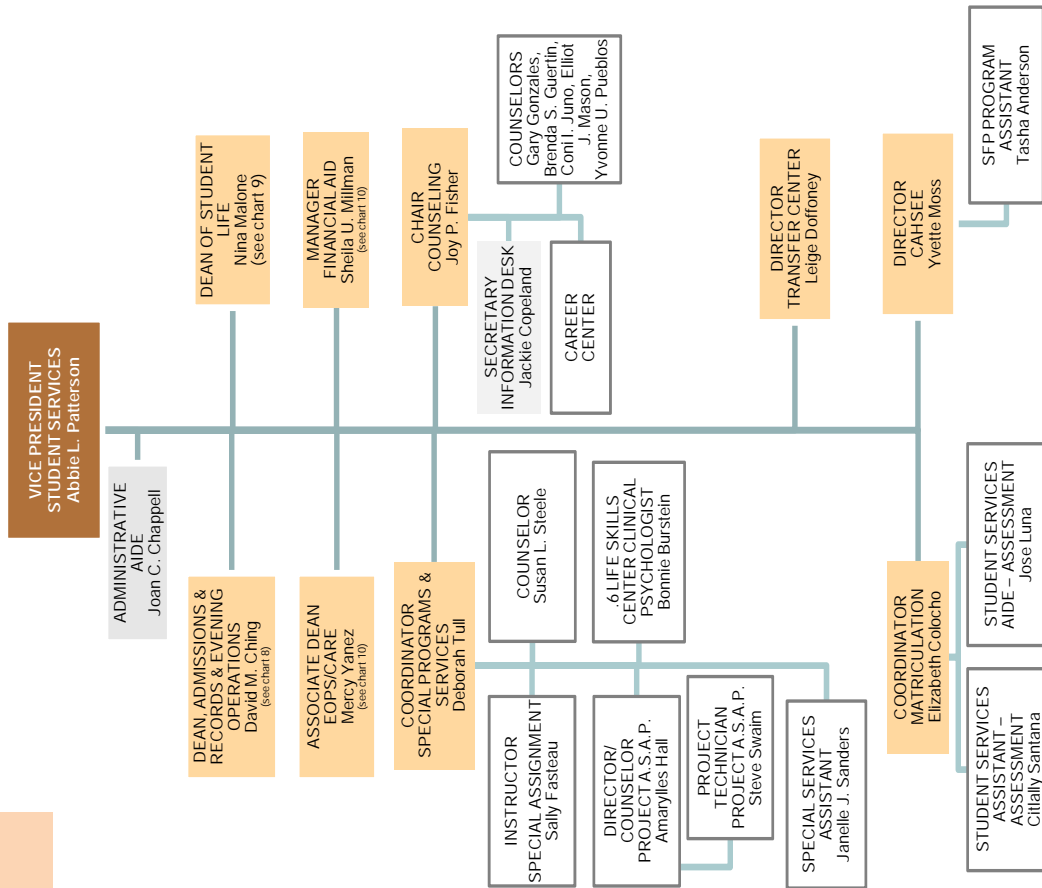


As of June 30, 2009

# ADDENDUM

## COLLEGE ORGANIZATION

Student Services (1 of 4)  
Chart 7

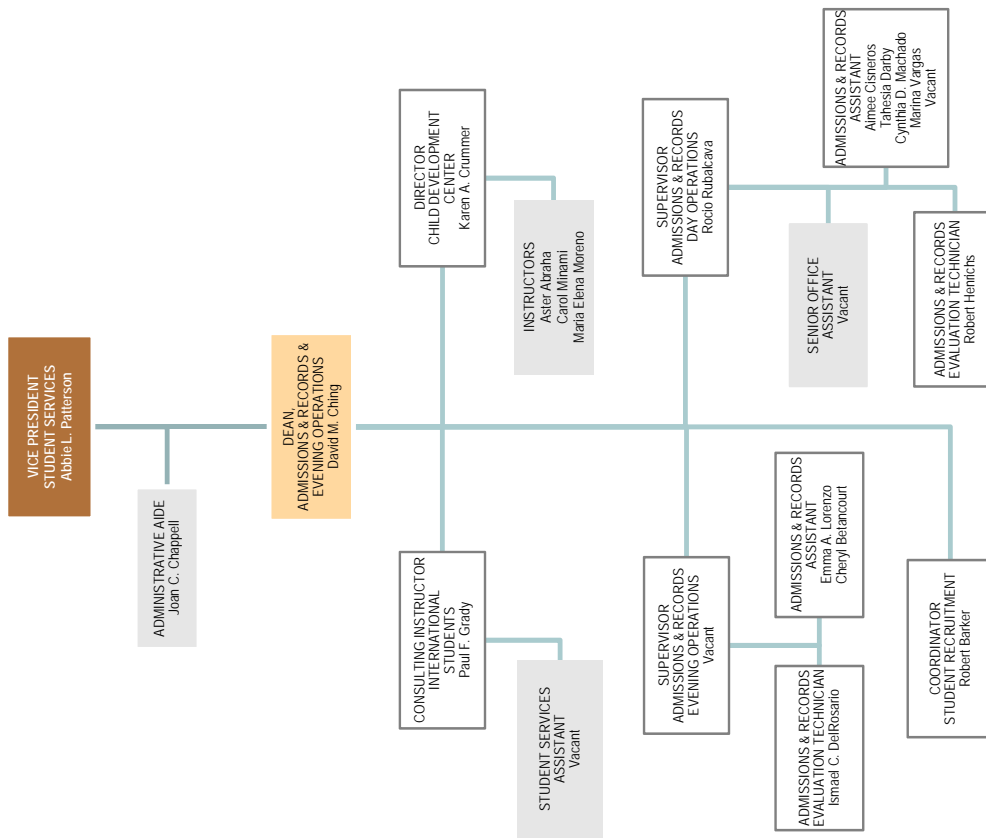


# ADDENDUM

## COLLEGE ORGANIZATION

### Student Services (2 of 4)

Chart 8



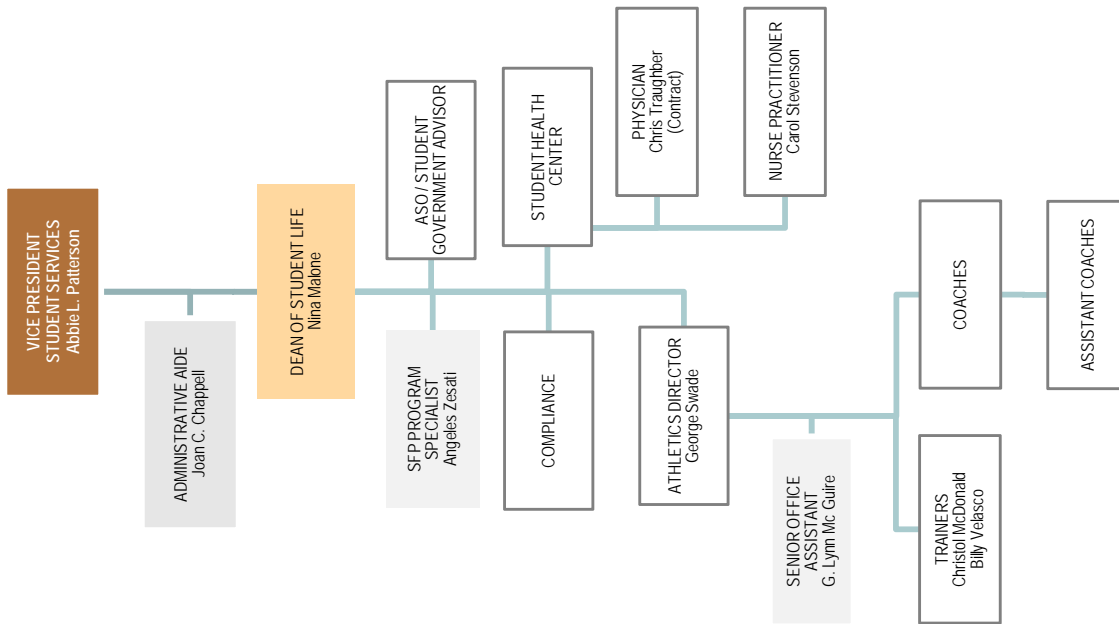
As of June 30, 2009

# ADDENDUM

## COLLEGE ORGANIZATION

### Student Services (3 of 4)

#### Chart 9

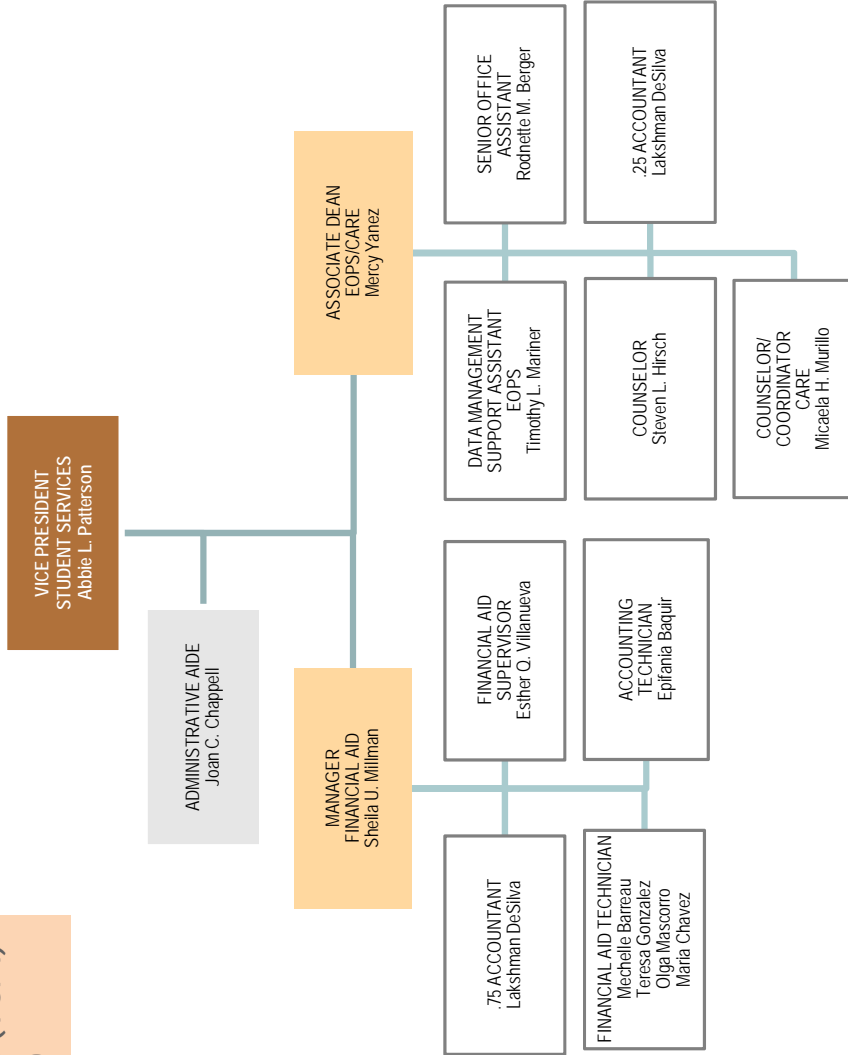


As of June 30, 2009

# ADDENDUM

## COLLEGE ORGANIZATION

Student Services (4 of 4)  
Chart 10

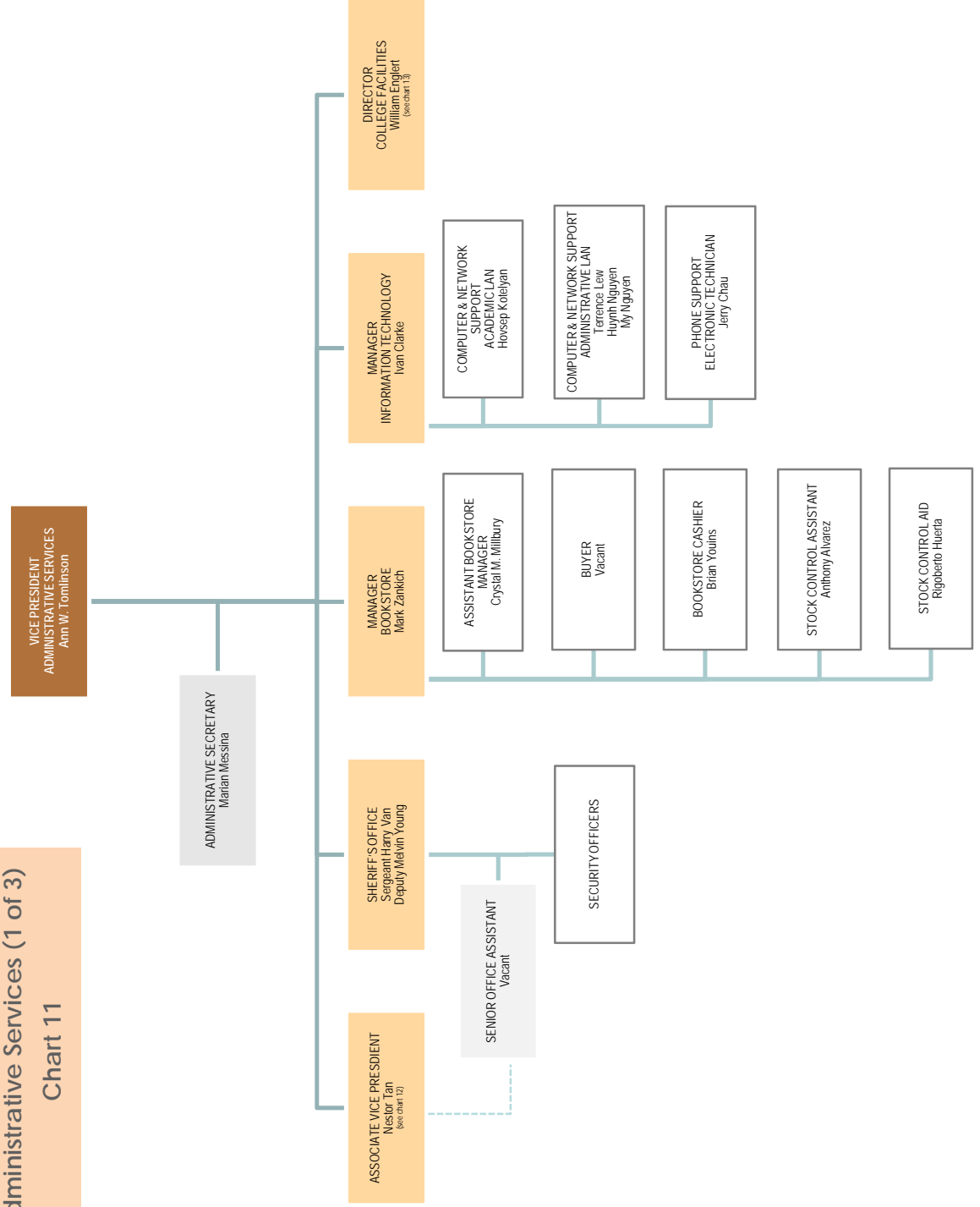


As of June 30, 2009

# ADDENDUM

## COLLEGE ORGANIZATION

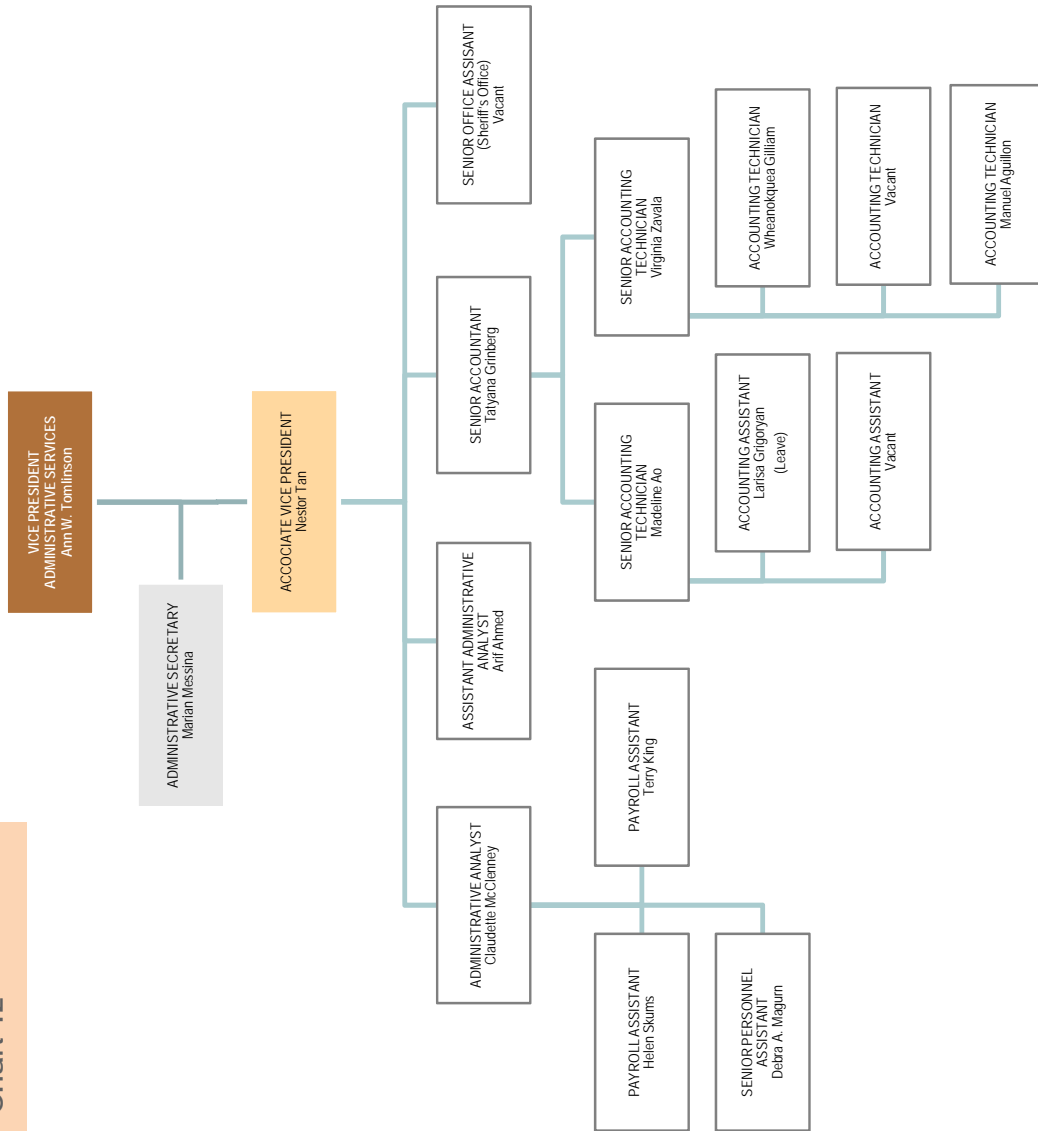
**Administrative Services (1 of 3)**  
**Chart 11**



As of June 30, 2009

# ADDENDUM COLLEGE ORGANIZATION

**Administrative Services (2 of 3)  
Chart 12**



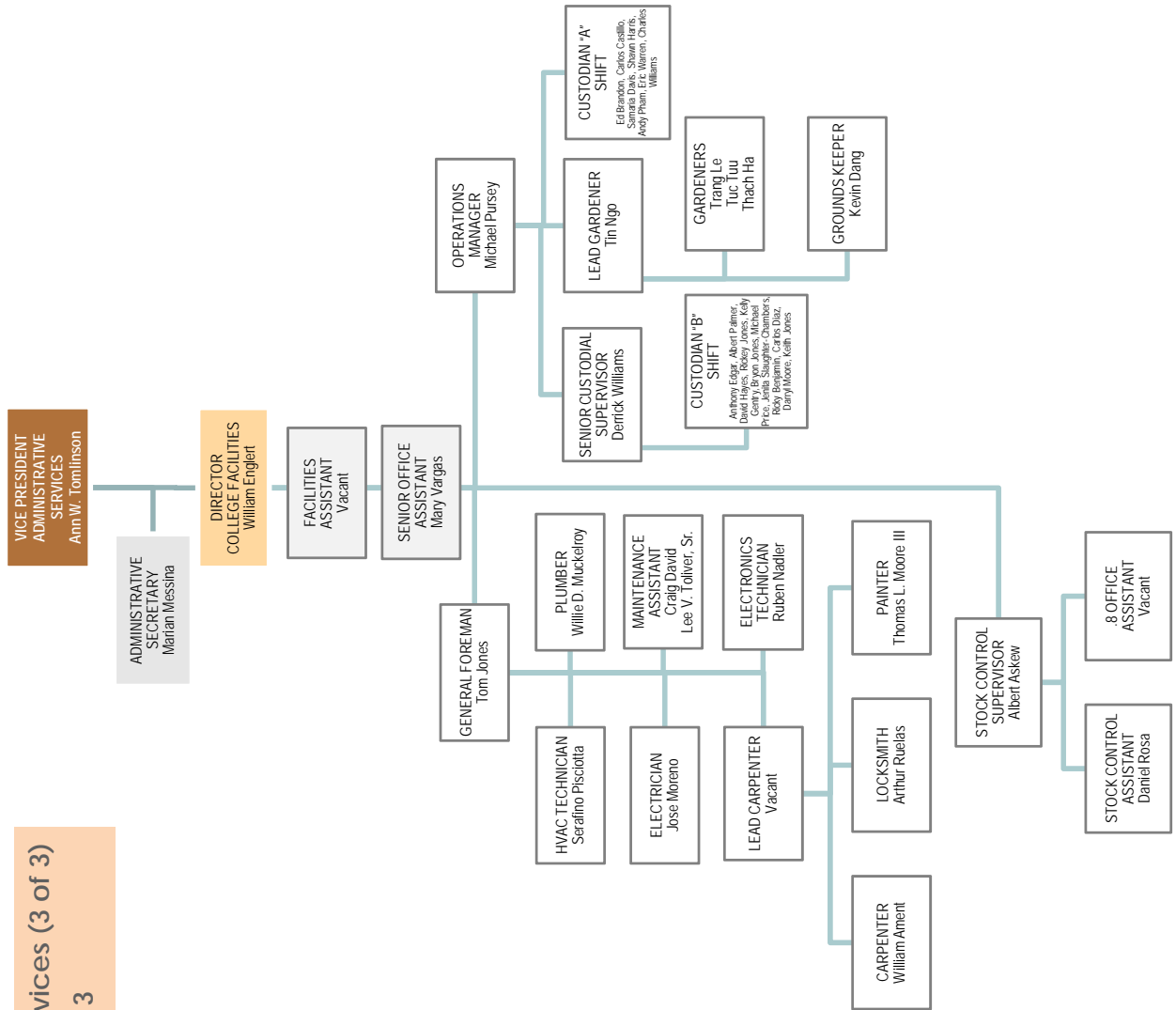
As of June 30, 2009

# ADDENDUM

## COLLEGE ORGANIZATION

Administrative Services (3 of 3)

Chart 13



As of June 30, 2009