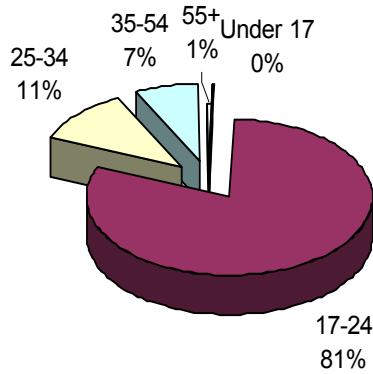


# SPECIAL POPULATIONS

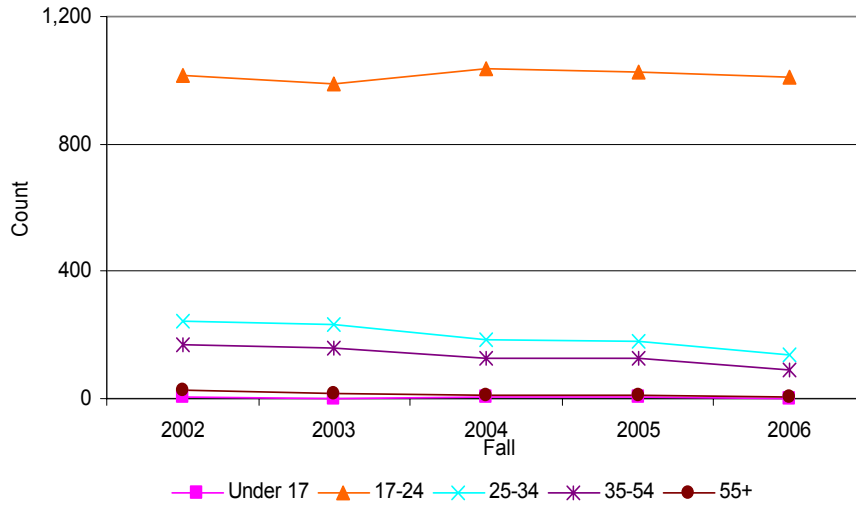
## NEW ENTERING STUDENTS

### Age

**Fall 2006**



**Unduplicated Headcount  
New Entering College Student Age**



AGE	Fall				
	2002	2003	2004	2005	2006
Under 17	4 0.3%	2 0.1%	3 0.2%	6 0.4%	2 0.2%
17-24	1,013 69.7%	987 70.9%	1,034 76.0%	1,027 76.0%	1,008 81.0%
25-34	241 16.6%	231 16.6%	185 13.6%	181 13.4%	136 10.9%
35-54	171 11.8%	157 11.3%	128 9.4%	128 9.5%	91 7.3%
55+	24 1.7%	16 1.1%	10 0.7%	9 0.7%	7 0.6%
<b>Total</b>	<b>1,453</b> 100.0%	<b>1,393</b> 100.0%	<b>1,360</b> 100.0%	<b>1,351</b> 100.0%	<b>1,244</b> 100.0%

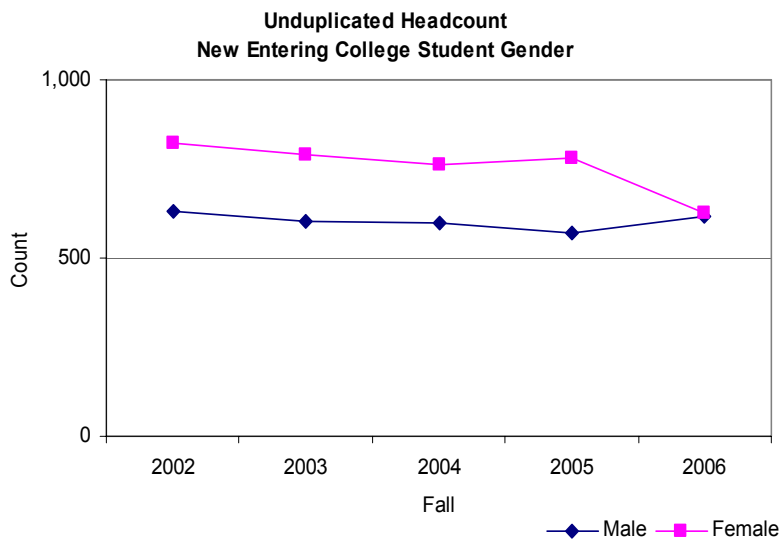
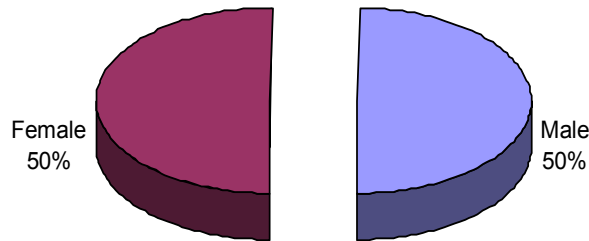
Source: LACCD Census Data Warehouse (CEN\_Rdb) and Student Information System (SIS), June 26, 2007.

# SPECIAL POPULATIONS

## NEW ENTERING STUDENTS

### Gender

Fall 2006



GENDER	Fall				
	2002	2003	2004	2005	2006
Male	631 43.4%	604 43.4%	598 44.0%	571 42.3%	617 49.6%
Female	822 56.6%	789 56.6%	762 56.0%	780 57.7%	627 50.4%
<b>Total</b>	<b>1,453</b> 100.0%	<b>1,393</b> 100.0%	<b>1,360</b> 100.0%	<b>1,351</b> 100.0%	<b>1,244</b> 100.0%

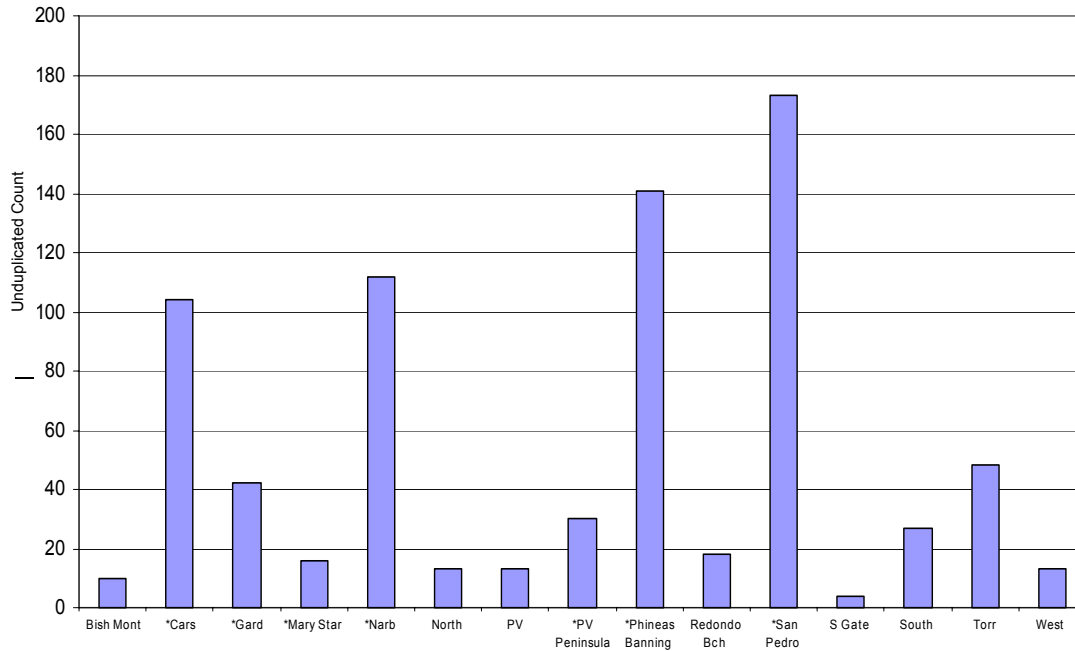
Source: LACCD Census Data Warehouse (CEN\_Rdb) and Student Information System (SIS), June 26, 2007.

# SPECIAL POPULATIONS

## NEW ENTERING STUDENTS

### High School Origin

**Fall 2006 New Entering College Student  
High School Origin**



School Code	High School Description	Fall				
		2002	2003	2004	2005	2006
194066	*Bishop Montgomery HS	10	12	10	10	10
193152	*Carson HS	84	90	118	93	104
193324	*Gardena HS	24	30	35	30	42
194441	*Mary Star of the Sea HS	27	29	20	26	16
193616	*Narbonne HS	85	110	98	101	112
193627	North HS	13	11	15	14	13
193668	Palos Verdes HS	14	6	9	14	13
193734	*Palos Verdes Peninsula HS	35	35	29	28	30
193065	*Phineas Banning HS	145	118	134	146	141
193714	Redondo Beach HS	17	23	20	26	18
193783	*San Pedro HS	176	137	157	136	173
193830	South Gate HS	9	5	8	5	4
193835	South HS	26	18	27	28	27
193875	Torrance HS	33	26	46	31	48
193960	West HS	11	13	18	8	13
	Other LA High Schools	287	327	281	285	215
	Other California	196	173	185	194	149
	Out of State	71	63	51	70	47
	Out of Country	107	124	88	89	60
	Unknown	83	43	11	17	9
<b>Total</b>		<b>1,453</b>	<b>1,393</b>	<b>1,360</b>	<b>1,351</b>	<b>1,244</b>

Source: LACCD Census Data Warehouse (CEN\_Rdb) and Student Information System (SIS), June 26, 2007.

\*Feeder High School

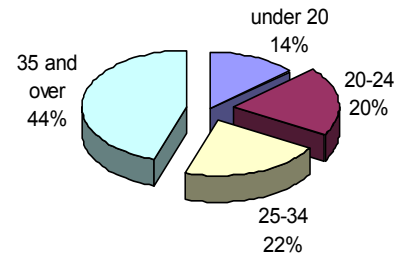
# SPECIAL POPULATIONS

## SPECIAL PROGRAMS AND SERVICES

### Gender

Gender	2001/02	2002/03	2003/04	2004/05	2005/06
Male	223 42.8%	245 42.9%	196 38.0%	215 38.9%	204 40.2%
Female	298 57.2%	326 57.1%	320 62.0%	337 61.1%	303 59.8%
<b>Total</b>	<b>521</b> 100.0%	<b>571</b> 100.0%	<b>516</b> 100.0%	<b>552</b> 100.0%	<b>507</b> 100.0%

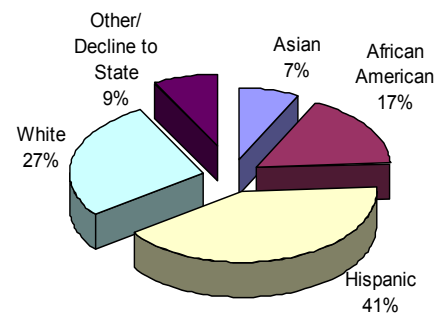
2005/06 DSPS Unduplicated Count by Age



### Ethnicity

Ethnicity	2001/02	2002/03	2003/04	2004/05	2005/06
Asian	22 4.2%	36 6.3%	28 5.4%	29 5.3%	36 7.1%
African American	78 15.0%	104 18.2%	87 16.9%	104 18.8%	86 17.0%
Hispanic	179 34.4%	191 33.5%	187 36.2%	196 35.5%	207 40.8%
White	194 37.2%	187 32.7%	161 31.2%	181 32.8%	138 27.2%
Other/Decline to State	48 9.2%	53 9.3%	53 10.3%	42 7.6%	40 7.9%
<b>Total</b>	<b>521</b> 100.0%	<b>571</b> 100.0%	<b>516</b> 100.0%	<b>552</b> 100.0%	<b>507</b> 100.0%

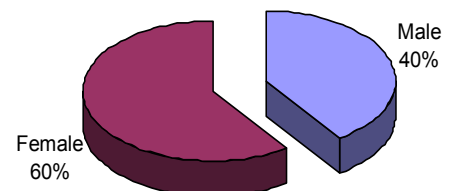
2005/06 DSPS Unduplicated Count by Ethnicity



### Age

Age	2001/02	2002/03	2003/04	2004/05	2005/06
under 20	52 10.0%	73 12.8%	27 5.2%	68 12.3%	69 13.6%
20-24	76 14.6%	86 15.1%	89 17.2%	101 18.3%	100 19.7%
25-34	104 20.0%	124 21.7%	138 26.7%	120 21.7%	110 21.7%
35 and over	289 55.5%	288 50.4%	262 50.8%	263 47.6%	228 45.0%
<b>Total</b>	<b>521</b> 100.0%	<b>571</b> 100.0%	<b>516</b> 100.0%	<b>552</b> 100.0%	<b>507</b> 100.0%

2005/06 DSPS Unduplicated Count by Gender

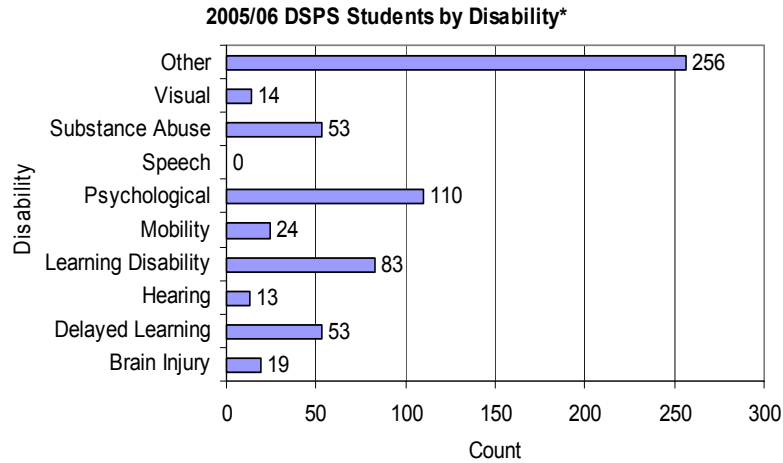


Source: LACCD Student Information System (SIS), November 30, 2006.

# SPECIAL POPULATIONS

## SPECIAL PROGRAMS AND SERVICES

### \*Disability



Disability*	2001/02	2002/03	2003/04	2004/05	2005/06
Brain Injury	14 2.5%	17 2.8%	14 2.6%	19 2.9%	17 2.8%
Delayed Learning	52 9.2%	57 9.2%	56 10.4%	53 8.2%	45 7.5%
Hearing	7 1.2%	10 1.6%	11 2.0%	13 2.0%	9 1.5%
Learning Disability	123 21.8%	104 16.9%	73 13.6%	83 12.8%	73 12.2%
Mobility	39 6.9%	41 6.6%	25 4.7%	24 3.7%	20 3.4%
Psychological	66 11.7%	74 12.0%	78 14.5%	110 17.0%	110 18.4%
Speech	0 0.0%	0 0.0%	0 0.0%	1 0.2%	0 0.0%
Substance Abuse	41 7.3%	42 6.8%	46 8.6%	54 8.4%	53 8.9%
Visual	8 1.4%	16 2.6%	16 3.0%	16 2.5%	14 2.3%
Other	213 37.8%	256 41.5%	218 40.6%	273 42.3%	256 42.9%
<b>Total</b>	<b>563</b> 100.0%	<b>617</b> 100.0%	<b>537</b> 100.0%	<b>646</b> 100.0%	<b>597</b> 100.0%

\*Duplicated count.

Source: LACCD Student Information System (SIS), November 30, 2006.

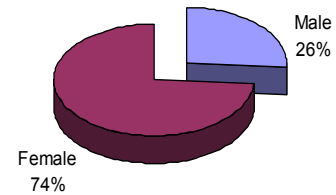
# SPECIAL POPULATIONS

## EOP&S

### Gender

Gender	2002/03	2003/04	2004/05	2005/06
Male	246 26.8%	147 25.0%	150 22.6%	186 26.1%
Female	673 73.2%	441 75.0%	515 77.4%	527 73.9%
<b>Total</b>	<b>919</b> 100.0%	<b>588</b> 100.0%	<b>665</b> 100.0%	<b>713</b> 100.0%

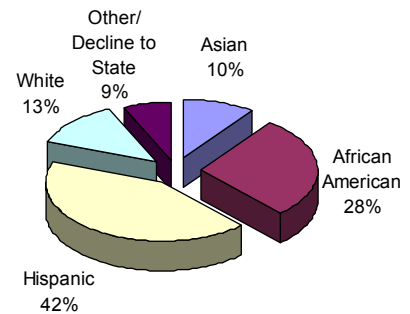
2005/06 EOPS Unduplicated Count by Gender



### Ethnicity

Ethnicity	2002/03	2003/04	2004/05	2005/06
Asian	243 26.4%	170 28.9%	51 7.7%	71 10.0%
African American	52 5.7%	36 6.1%	179 26.9%	200 28.1%
Hispanic	419 45.6%	260 44.2%	288 43.3%	304 42.6%
White	132 14.4%	72 12.2%	106 15.9%	91 12.8%
Other/Decline to State	73 7.9%	50 8.5%	41 6.2%	47 6.6%
<b>Total</b>	<b>919</b> 100.0%	<b>588</b> 100.0%	<b>665</b> 100.0%	<b>713</b> 100.0%

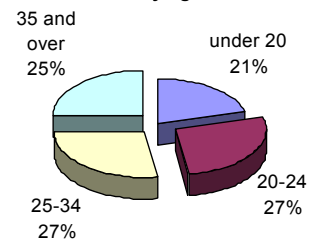
2005/06 EOPS Unduplicated Count by Ethnicity



### Age

Age	2002/03	2003/04	2004/05	2005/06
under 20	106 11.5%	103 17.5%	100 15.0%	147 20.6%
20-24	290 31.6%	164 27.9%	195 29.3%	194 27.2%
25-34	258 28.1%	159 27.0%	188 28.3%	194 27.2%
35 and over	265 28.8%	162 27.6%	182 27.4%	178 25.0%
<b>Total</b>	<b>919</b> 100.0%	<b>588</b> 100.0%	<b>665</b> 100.0%	<b>713</b> 100.0%

2005/06 EOPS Unduplicated Count by Age



Source: LAHC EOP&S Office and LACCD Student Information System (SIS).

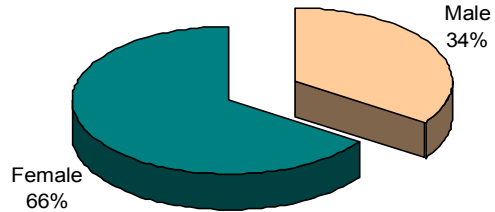
# SPECIAL POPULATIONS

## INTERNATIONAL STUDENTS

### Gender

Gender	Fall				
	2002	2003	2004	2005	2006
Male	50 47.6%	47 42.3%	40 41.7%	36 36.4%	31 34.4%
Female	55 52.4%	64 57.7%	56 58.3%	63 63.6%	59 65.6%
<b>TOTAL</b>	<b>105</b> 100.0%	<b>111</b> 100.0%	<b>96</b> 100.0%	<b>99</b> 100.0%	<b>90</b> 100.0%

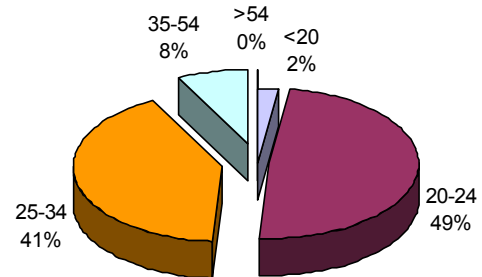
Fall 2006 Int'l Students Unduplicated Count by Gender



### Age

AGE	Fall				
	2002	2003	2004	2005	2006
<20	16 15.2%	15 13.5%	7 7.3%	6 6.1%	2 2.2%
20-24	43 41.0%	47 42.3%	43 44.8%	43 43.4%	44 48.9%
25-34	38 36.2%	41 36.9%	39 40.6%	41 41.4%	37 41.1%
35-54	8 7.6%	8 7.2%	7 7.3%	9 9.1%	7 7.8%
>54	0 0.0%	0 0.0%	0 0.0%	0 0.0%	0 0.0%
<b>TOTAL</b>	<b>105</b> 100.0%	<b>111</b> 100.0%	<b>96</b> 100.0%	<b>99</b> 100.0%	<b>90</b> 100.0%

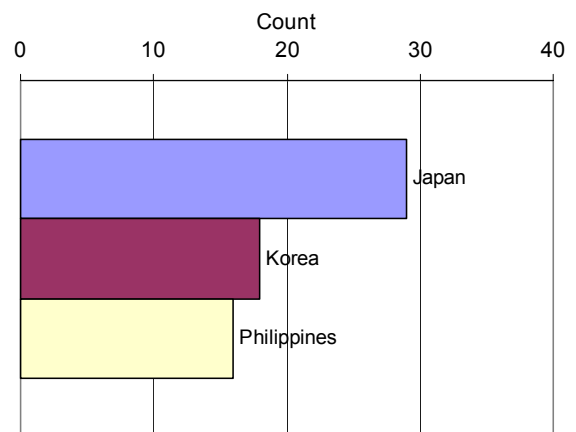
Fall 2006 Int'l Students Unduplicated Count by Age



### Top Three Countries Represented

Top 3 Countries	Fall				
	2002	2003	2004	2005	2006
Japan	40 38.1%	49 44.1%	46 47.9%	43 43.4%	29 32.2%
Korea	17 16.2%	15 13.5%	10 10.4%	15 15.2%	18 20.0%
Philippines	11 10.5%	9 8.1%	6 6.3%	6 6.1%	16 17.8%

Fall 2006 Top 3 Countries of Origin



Source: LAHC International Student Office and LACCD Student Information System (SIS).

