

STUDENT ENROLLMENT
ENROLLMENT BY ZIP CODE

Zip Code	City	Fall Unduplicated Headcount			
		2003	2004	2005	2006
90044	Los Angeles	n/a	51	46	53
90220	Compton	81	77	72	76
90247	Gardena	142	140	166	151
90248	Gardena	n/a	57	48	50
90249	Gardena	52	45	45	46
90250	Hawthorne	97	103	104	100
90260	Lawndale	54	38	45	50
90274	Palos Verdes Peninsula	137	134	164	142
90275	Palos Verdes Peninsula	395	324	331	308
90277	Redondo Beach	107	108	99	117
90278	Redondo Beach	58	73	74	65
90501	Torrance	356	329	347	336
90502	Torrance	216	208	186	206
90503	Torrance	140	142	125	135
90504	Torrance	94	89	94	92
90505	Torrance	235	229	231	218
90710	Harbor City	564	518	490	443
90717	Lomita	336	355	330	325
90731	San Pedro	1,472	1,355	1,226	1,149
90732	San Pedro	395	349	328	322
90744	Wilmington	1,237	1,104	1,145	1,054
90745	Carson	1,199	1,082	1,110	1,028
90746	Carson	273	246	267	282
90802	Long Beach	n/a	52	50	56
90805	Long Beach	62	63	74	74
90806	Long Beach	n/a	51	46	47
90810	Long Beach	130	147	170	150
90813	Long Beach	50	38	54	43
	Other Zip Codes	1,299	1,069	1,006	993
Total		9,181	8,576	8,473	8,111

Source: LACCD Census Data Warehouse (CEN_Rdb).

STUDENT ENROLLMENT

DUPLICATED HEADCOUNT BY DEPARTMENT

	Fall				
	2002	2003	2004	2005	2006
Business					
Accounting	346	316	322	327	259
Business	604	692	675	597	594
Computer App & Office Technology	245	193	230	169	195
Computer Information Systems	820	653	555	440	345
Finance	18	55	32	45	28
International Business	13	23	12	17	8
Management	51	84	76	41	54
Marketing	1	n/a	28	34	42
Office Administration	n/a	n/a	n/a	12	6
Real Estate	176	220	179	233	209
Supervision	17	32	18	17	25
Business Total	2,291	2,268	2,127	1,932	1,765
Communications					
Developmental Communications	272	207	177	204	120
English	2,391	2,359	2,335	2,312	2,359
English as a Second Language	202	20	22	5	27
French	40	31	71	53	88
Japanese	47	44	40	46	57
Journalism	28	17	66	69	62
Spanish	556	445	510	535	479
Speech	742	759	819	865	777
Communications Total	4,278	3,882	4,040	4,089	3,969
Cooperative Education					
Cooperative Education	5	24	41	38	106
Cooperative Education Total	5	24	24	38	106
Health Sciences					
Emergency Department Assistant	144	133	144	132	127
Fire Technology	102	153	119	82	95
Nursing	932	1,161	1,200	1,394	1,607
Health Sciences Total	1,178	1,447	1,463	1,608	1,829

Source: Grade Distribution Report (D5120-001 and D5130-001).

DUPLICATED HEADCOUNT BY DEPARTMENT

	Fall				
	2002	2003	2004	2005	2006
Humanities & Fine Arts					
Architecture	215	243	303	237	250
Art	850	903	760	767	663
Environmental Design	n/a	n/a	n/a	22	19
Humanities	410	632	504	544	501
Music	1,174	1,314	1,266	1,029	942
Philosophy	526	415	343	354	429
Photography	125	166	n/a	125	119
Theater	412	398	379	299	259
Humanities & Fine Arts Total	3,712	4,071	3,555	3,377	3,182
Math, Physical Science, & Technology					
Astronomy	115	143	127	142	141
* Automotive Technology	101	n/a	n/a	n/a	n/a
Chemistry	285	210	284	235	207
* Computer Science	281	169	156	126	127
* Computer Technology	35	169	160	168	149
* Drafting	173	160	97	120	80
* Electronics	109	14	1	3	9
* Engineering General	21	5	12	11	34
* Engineering Technology	48	18	24	23	60
Math	2,465	2,267	2,226	2,357	2,586
Physical Science	66	62	49	48	32
Physics	82	61	79	60	75
* Process Plant Technology	n/a	n/a	n/a	n/a	112
Statistics	65	35	52	10	48
Math, Physical Science, & Technology Total	3,846	3,313	3,267	3,303	3,660
Physical Education					
Health	468	536	557	509	542
PE	17	71	n/a	27	29
Physical Education	1,798	1,790	1,656	1,720	1,512
Physical Education Total	2,283	2,397	2,213	2,256	2,083
Science, Family & Consumer Studies					
Anatomy	325	373	340	367	374
Biology	419	370	348	329	353
Child Development	1,050	954	883	931	859
Culinary Art	n/a	n/a	n/a	n/a	28
Environmental Science	15	25	23	86	42
Family and Consumer Studies	100	106	63	110	125
Geography	281	267	262	260	186
Geology	54	93	53	46	47
Microbiology	96	145	108	180	197
Oceanography	357	345	334	310	323
Ornamental Horticulture	9	7	n/a	n/a	n/a
Physiology	153	184	179	255	219
Science, Family & Consumer Studies Total	2,859	2,869	2,593	2,874	2,753

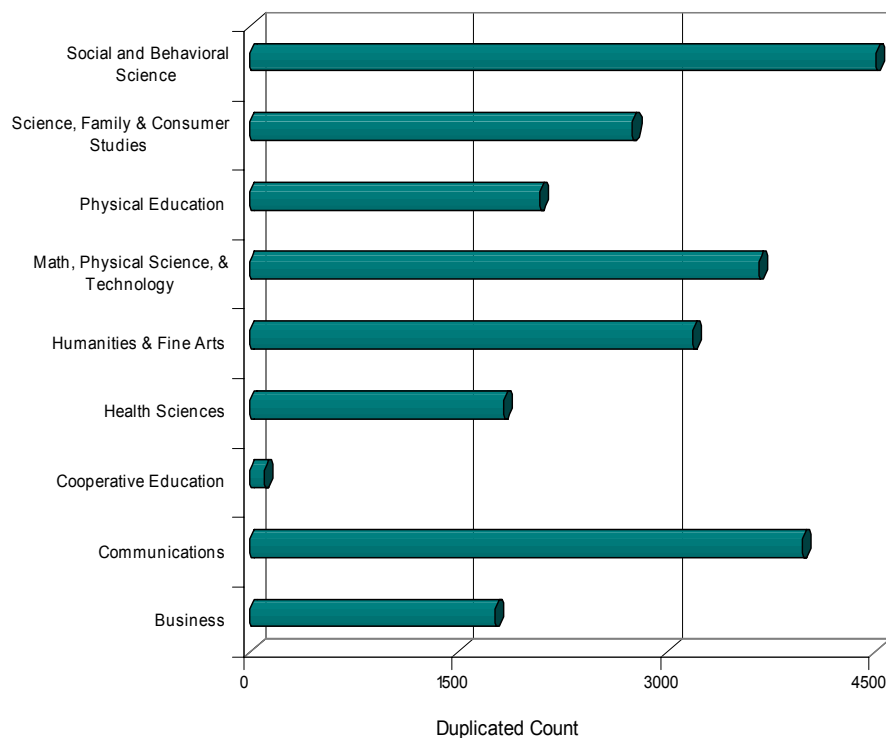
*Department was under the Technology Division prior to Fall 2004.
Source: Grade Distribution Report (D5120-001 and D5130-001).

STUDENT ENROLLMENT

DUPLICATED HEADCOUNT BY DEPARTMENT

	Fall				
	2002	2003	2004	2005	2006
Social and Behavioral Sciences					
Administration of Justice	426	501	393	328	302
** Anthropology	316	275	275	341	250
Economics	331	324	325	304	232
** Education	1	n/a	2	n/a	4
History	1,029	1,334	1,141	1,035	972
** Learning Foundation	18	27	36	39	26
** Learning Skills	619	490	459	318	441
** Personal Development	167	150	189	60	137
Poli Science	749	584	600	546	515
** Psychology	1,044	958	991	1,022	1,030
** Service Learning	n/a	n/a	n/a	71	44
** Sociology	990	919	886	903	852
** Tutoring	1	1	1	n/a	n/a
Social and Behavioral Science Total	5,691	5,563	5,298	4,967	4,805
College Total Duplicated Headcount	26,143	25,834	24,580	24,444	24,152

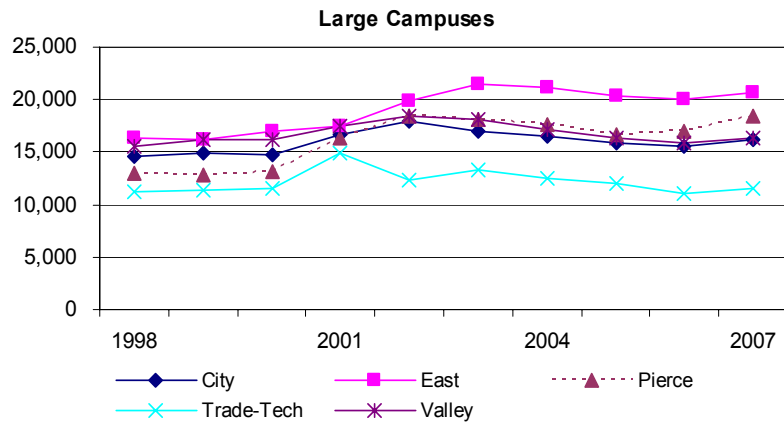
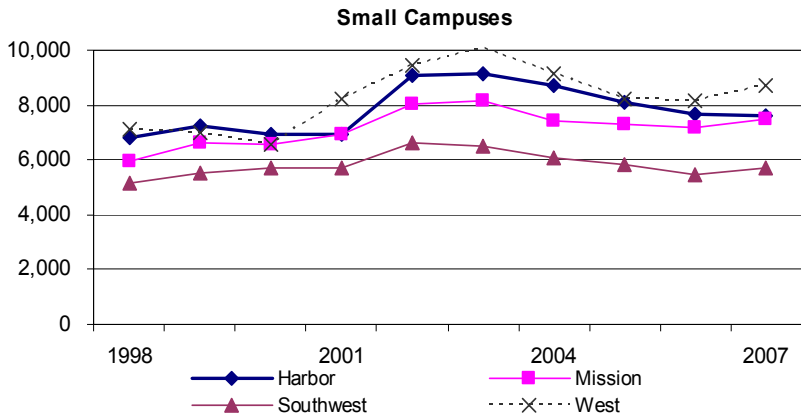
Fall 2006 Duplicated Headcount by Division



**Department was under its own division (Behavioral Sciences Division) prior to Fall 2006.
Source: Grade Distribution Report (D5120-001 and D5130-001).

SPRING UNDUPLICATED HEADCOUNT

Spring Semester, Credit Enrollment



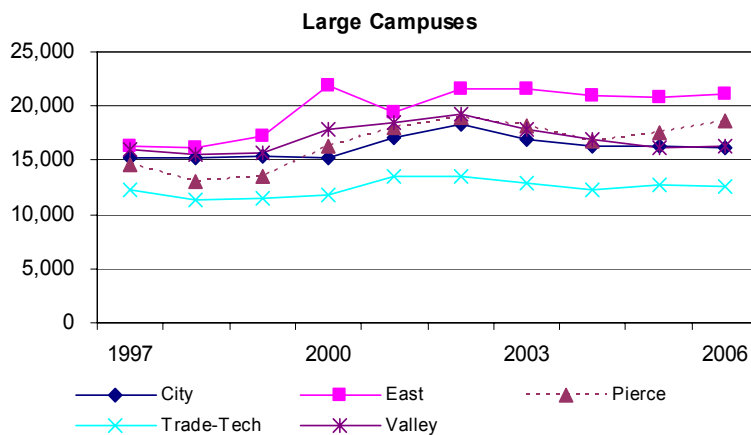
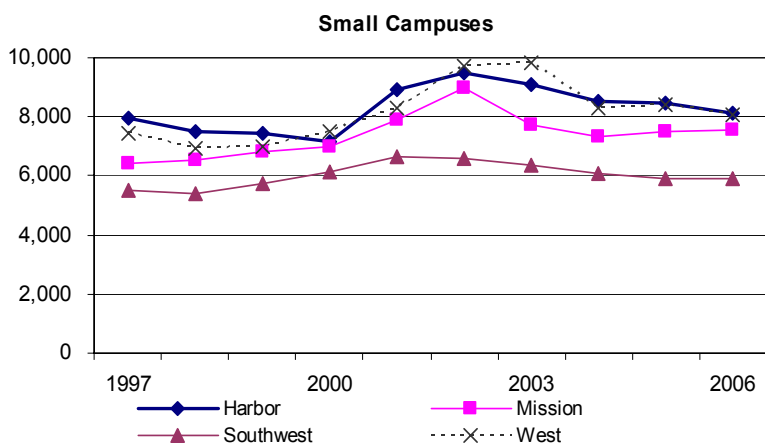
	Spring									
	1998	1999	2000	2001	2002	2003	2004	2005	2006	2007
Harbor	6,797	7,228	6,956	6,956	9,083	9,169	8,727	8,100	7,674	7,611
Mission	5,925	6,620	6,564	6,929	8,051	8,188	7,393	7,289	7,200	7,464
Southwest	5,133	5,505	5,697	5,723	6,605	6,501	6,095	5,838	5,474	5,719
West	7,122	6,967	6,556	8,236	9,428	10,040	9,139	8,216	8,133	8,730
Sub Total	24,977	26,320	25,773	27,844	33,167	33,898	31,354	29,443	28,481	29,524
Average	6,244	6,580	6,443	6,961	8,292	8,475	7,839	7,361	7,120	7,381
City	14,643	14,906	14,771	16,637	17,986	17,035	16,479	15,862	15,576	16,144
East	16,417	16,109	16,990	17,494	19,946	21,425	21,139	20,348	20,017	20,693
Pierce	13,033	12,782	13,211	16,344	18,499	18,112	17,645	16,741	17,054	18,488
Trade-Tech	11,276	11,412	11,550	14,844	12,404	13,292	12,515	11,941	11,018	11,575
Valley	15,615	16,129	16,130	17,409	18,401	18,055	17,178	16,306	15,924	16,396
Sub Total	70,984	71,338	72,652	82,728	87,236	87,919	84,956	81,198	79,589	83,296
Average	14,197	14,268	14,530	16,546	17,447	17,584	16,991	16,240	15,918	16,659
ITV	1,672	1,765	1,596	540	1,774	1,790	1,616	994	562	538
TOTAL	97,633	99,423	100,021	111,112	122,177	123,607	117,926	111,635	108,632	113,358

Source: LACCD Attendance Accounting and Census Data Warehouse (CEN_Rdb).

STUDENT ENROLLMENT

FALL UNDUPLICATED HEADCOUNT

Fall Semester, Credit Enrollment



	Fall									
	1997	1998	1999	2000	2001	2002	2003	2004	2005	2006
Harbor	7,931	7,494	7,466	7,151	8,907	9,469	9,102	8,542	8,473	8,111
Mission	6,399	6,528	6,824	6,979	7,918	8,966	7,749	7,328	7,525	7,540
Southwest	5,502	5,391	5,767	6,135	6,620	6,600	6,353	6,107	5,935	5,931
West	7,466	6,955	6,977	7,499	8,274	9,718	9,804	8,305	8,390	8,088
Sub Total	27,298	26,368	27,034	27,764	31,719	34,753	33,008	30,282	30,323	29,670
Average	6,825	6,592	6,759	6,941	7,930	8,688	8,252	7,571	7,581	7,418
City	15,275	15,141	15,443	15,271	17,142	18,372	16,983	16,268	16,306	16,119
East	16,281	16,197	17,197	21,951	19,425	21,629	21,596	20,973	20,813	21,109
Pierce	14,523	13,082	13,512	16,233	17,951	18,874	18,241	16,764	17,575	18,556
Trade-Tech	12,269	11,383	11,536	11,828	13,486	13,437	12,935	12,307	12,757	12,519
Valley	16,001	15,523	15,682	17,803	18,491	19,275	17,865	16,920	16,111	16,376
Sub Total	74,349	71,326	73,370	83,086	86,495	91,587	87,620	83,232	83,562	84,679
Average	14,870	14,265	14,674	16,617	17,299	18,317	17,524	16,646	16,712	16,936
ITV	1,604	1,471	1,416	1,305	1,613	1,673	1,813	1,167	816	428
Total	103,251	99,165	101,820	112,155	119,827	128,013	122,441	114,681	114,701	114,777

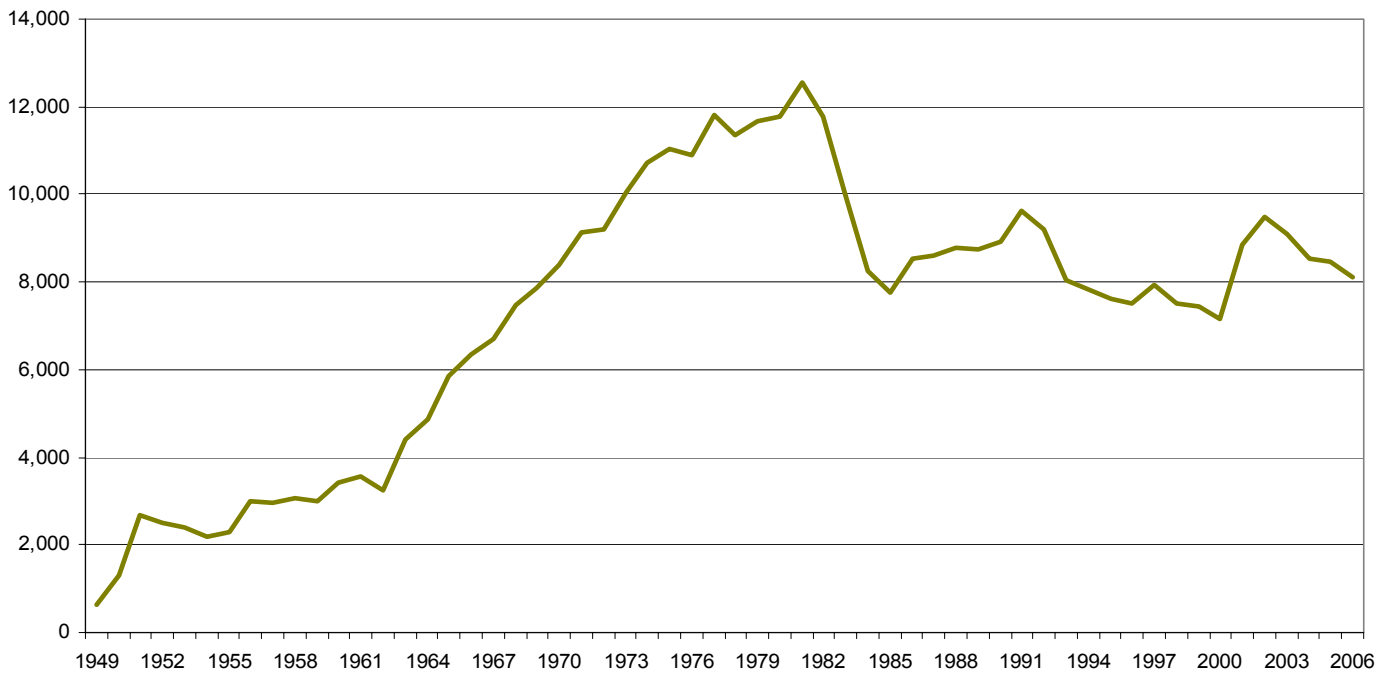
Source: LACCD Attendance Accounting and Census Data Warehouse (CEN_Rdb).

STUDENT ENROLLMENT

FALL UNDUPLICATED HEADCOUNT

1949 to 2006

Fall 1949 - 2006 Enrollment



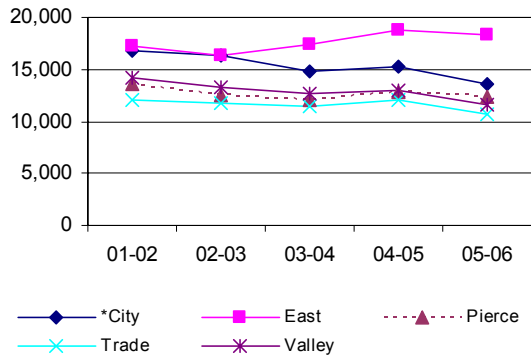
Source: LACCD Attendance Accounting and Census Data Warehouse (CEN_Rdb).

STUDENT ENROLLMENT

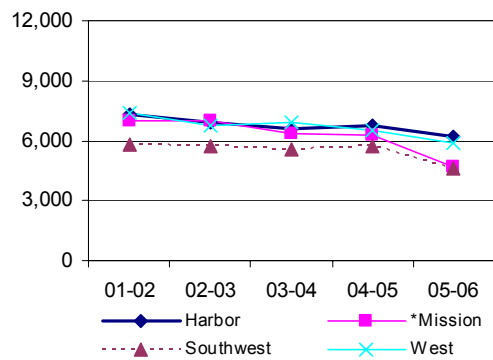
ANNUAL FTES

1987/88 to 2005/06

Large Campuses



Small Campuses



	87-88	88-89	89-90	90-91	91-92	92-93	93-94	94-95	95-96	96-97
Harbor	4,586	4,586	4,635	5,453	6,051	5,466	5,245	5,332	5,238	5,302
*Mission	1,932	1,948	2,426	3,324	3,867	3,990	3,285	3,170	3,454	3,630
Southwest	2,210	2,491	2,836	4,409	4,508	3,812	4,013	3,879	3,577	3,342
West	3,613	3,765	4,065	5,280	5,151	4,905	4,633	4,519	4,784	4,794
Sub Total	12,342	12,791	13,962	18,466	19,577	18,172	17,175	16,900	17,053	17,068
Average	3,085	3,198	3,491	4,616	4,894	4,543	4,294	4,225	4,263	4,267
*City	7,621	7,967	8,718	9,876	10,634	10,698	9,720	9,815	9,985	10,595
East	6,446	6,943	7,386	9,938	8,880	9,068	9,422	9,879	10,467	11,631
Pierce	9,041	9,124	9,402	11,179	11,305	10,884	9,477	9,088	9,232	9,082
Trade	7,804	7,870	7,973	9,369	10,234	10,358	9,871	9,548	9,609	10,088
Valley	8,019	8,168	8,505	9,884	10,837	10,590	9,692	9,666	9,705	9,905
Sub Total	38,932	40,071	41,985	50,246	51,889	51,597	48,181	47,996	48,997	51,301
Average	7,786	8,014	8,397	10,049	10,378	10,319	9,636	9,599	9,799	10,260
Total	51,273	52,862	55,947	68,712	71,466	69,770	65,356	64,896	66,050	68,368

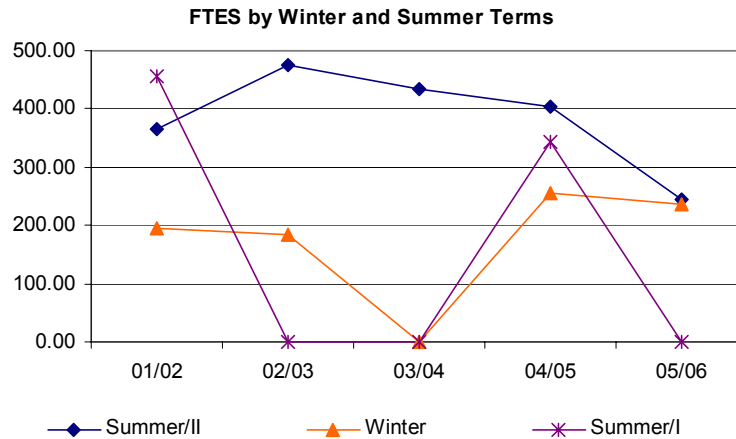
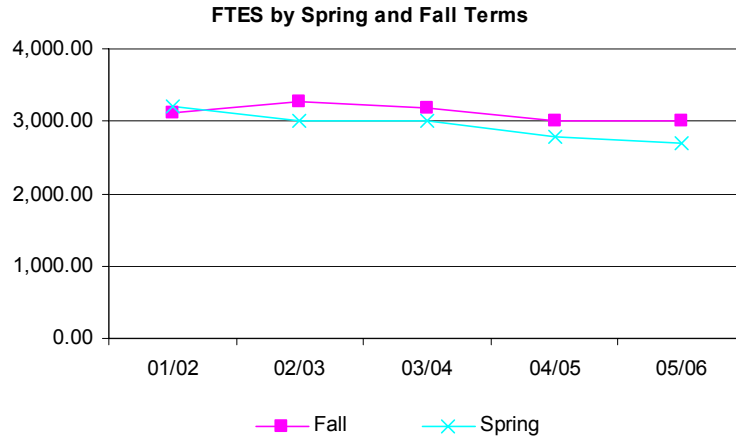
	97-98	98-99	99-00	00-01	01-02	02-03	03-04	04-05	05-06
Harbor	5,412	5,540	5,454	6,394	7,342	6,929	6,619	6,793	6,186
*Mission	4,348	5,132	5,730	5,814	7,030	7,004	6,353	6,251	4,721
Southwest	3,925	4,388	4,757	4,969	5,776	5,704	5,592	5,686	4,636
West	5,099	5,126	5,498	6,933	7,367	6,768	6,951	6,483	5,883
Sub Total	18,783	20,187	21,439	24,111	27,515	26,405	25,515	25,213	21,426
Average	4,696	5,047	5,360	6,028	6,879	6,601	6,379	6,303	5,357
*City	11,603	13,006	12,896	14,121	16,761	16,360	14,798	15,220	13,657
East	12,732	13,447	15,946	16,164	17,322	16,411	17,382	18,752	18,339
Pierce	8,776	8,938	9,214	11,503	13,644	12,578	12,083	12,802	12,302
Trade	10,100	9,749	10,336	11,968	12,069	11,697	11,496	12,086	10,658
Valley	10,419	10,588	10,930	13,079	14,154	13,276	12,741	12,911	11,670
Sub Total	53,631	55,729	59,322	66,837	73,950	70,322	68,501	71,771	66,626
Average	10,726	11,146	11,864	13,367	14,790	14,064	13,700	14,354	13,325
Total	72,414	75,915	80,761	90,948	101,465	96,728	94,017	96,984	88,052

*Figures are as stated on the CCFS-320 State Apportionment Attendance Reports and includes ITV.
Source: LACCD Attendance Accounting.

STUDENT ENROLLMENT

FTES BY TERM

Full-Time Equivalent Student by Term



Term	01/02	02/03	03/04	04/05	05/06
Summer/II	364.13	475.28	435.08	404.68	245.43
Fall	3,124.89	3,266.07	3,173.96	3,010.95	2,997.85
Winter	194.36	182.84	0.00	254.49	236.86
Spring	3,202.77	3,003.80	3,010.42	2,780.98	2,705.80
Summer/I	455.55	0.75	0.00	342.20	0.00
TOTAL	7,341.70	6,928.74	6,619.46	6,793.30	6,185.94

Source: LACCD Attendance Accounting.

